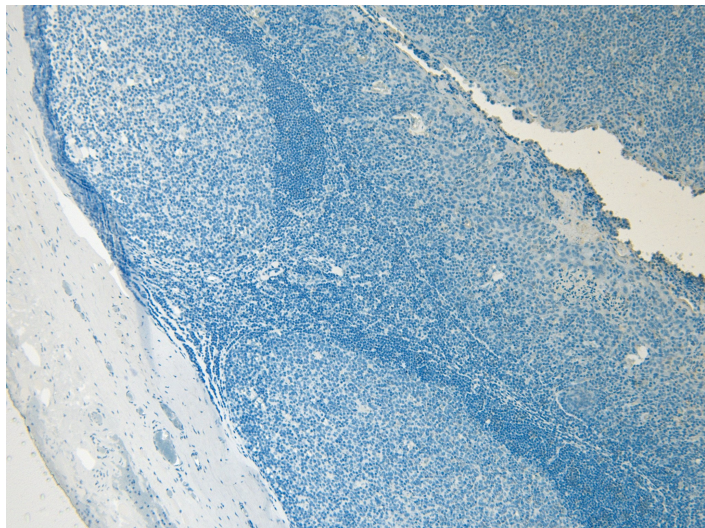


GOAT ANTI-SOX2 ANTIBODY

SKU: EB07378



SPECIFICATIONS

Formulation	Supplied at 0.5 mg/ml in Tris saline, 0.02% sodium azide, pH7.3 with 0.5% bovine serum albumin.
Unit Size	100 µg
Storage Instructions	Aliquot and store at -20°C. Minimize freezing and thawing.
Synonym / Alias Names	transcription factor SOX2 sex-determining region Y-box 2 SRY-related HMG-box gene 2 MGC2413 ANOP3 SRY (sex determining region Y)-box 2 SOX2
Usage Summary	Flow Cytometry: Flow cytometric analysis of HEK293 cells. Recommended concentration: 10ug/ml.
Accession ID	NP_003097.1
Blocking Peptide	EBP07378
Immunogen	Peptide with sequence YNMMETELKPPGPQQ-C, from the N Terminus of the protein sequence according to NP_003097.1.
Peptide Sequence	YNMMETELKPPGPQQ-C
Purification Method	Purified from goat serum by ammonium sulphate precipitation followed by antigen affinity chromatography using the immunizing peptide.
Shipping Instructions	Refrigerated

Predicted Species	Human, Rat, Dog, Cow
Reactive Species	Human
Human Gene ID	6657
Product Grade	https://prod-vector-labs-pimcore-assets.s3.us-east-1.amazonaws.com/assets/products/image/elite_plus_medium.png
IHC Results	Paraffin embedded Human Tonsil. Recommended concentration: 6-8µg/ml.
ELISA Detection Limit	Antibody detection limit dilution 1:32000.
Western Blot	Approx 40kDa band observed in HEK293 and MCF7 cell lysates and in nuclear lysates of cell line MCF7 (calculated MW of 34.3kDa according to JNP_003097.1). This molecular weight is routinely observed by other sources. Recommended concentration: 0.1-0.3µg/ml. Primary incubation 1 hour at room temperature.
Application Type	Pep-ELISA, WB, FC, IHC

DOCUMENTS

- [Data Sheet](#)

GALLERY IMAGES

