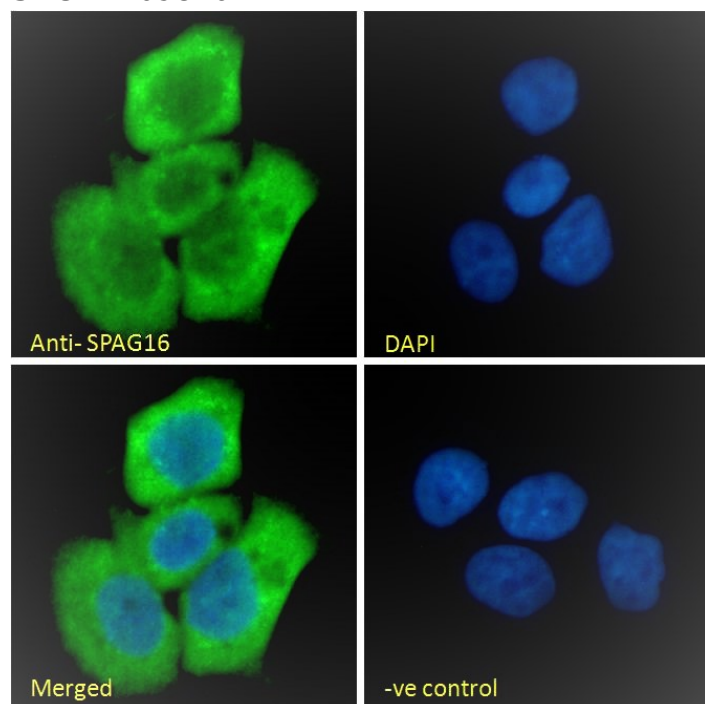


## GOAT ANTI-SPAG16 (AA139-152) ANTIBODY

SKU: EB09826



## SPECIFICATIONS

<b>Formulation</b>	Supplied at 0.5 mg/ml in Tris saline, 0.02% sodium azide, pH7.3 with 0.5% bovine serum albumin.
<b>Unit Size</b>	100 µg
<b>Storage Instructions</b>	Aliquot and store at -20°C. Minimize freezing and thawing.
<b>Synonym / Alias Names</b>	SPAG16 WDR29 WD repeat domain 29 sperm-associated WD repeat protein sperm associated antigen 16 PF20 MGC87036 FLJ37717 FLJ22724 DKFZp666P1710
<b>Usage Summary</b>	<p><strong>Immunofluorescence:</strong> Strong expression of the protein seen in the cytoplasm of A431 cells.</p> <p>Recommended concentration: 10µg/ml.</p> <p><strong>Flow Cytometry:</strong> Flow cytometric analysis of A431 cells. Recommended concentration: 10ug/ml.</p>
<b>Accession ID</b>	NP_078808.3; NP_001020607.1
<b>Blocking Peptide</b>	EBP09826

<b>Immunogen</b>	Peptide with sequence C-KGVTELRTVGNNPD, from the internal region of the protein sequence according to NP_078808.3; NP_001020607.1.
<b>Product Comments</b>	This antibody is expected to recognize isoform 1 and 2 (NP_078808.3; NP_001020607.1).
<b>Peptide Sequence</b>	C-KGVTELRTVGNNPD
<b>Purification Method</b>	Purified from goat serum by ammonium sulphate precipitation followed by antigen affinity chromatography using the immunizing peptide.
<b>Shipping Instructions</b>	Refrigerated
<b>Predicted Species</b>	Human, Dog, Cow
<b>Reactive Species</b>	Human, Mouse
<b>Human Gene ID</b>	79582
<b>Product Grade</b>	<a href="https://prod-vector-labs-pimcore-assets.s3.us-east-1.amazonaws.com/assets/products/image/elite_plus_medium.png">https://prod-vector-labs-pimcore-assets.s3.us-east-1.amazonaws.com/assets/products/image/elite_plus_medium.png</a>
<b>IHC Results</b>	This antibody was successfully used in Human and Murine frozen Brain sections (PMID: 25086173).
<b>ELISA</b>	
<b>Detection Limit</b>	Antibody detection limit dilution 1:16000.
<b>Application Type</b>	Pep-ELISA, FC, IF, IHC

## SELECTED REFERENCES

[{"pmid": 25086173, "intro": "", "title": "Sperm-associated antigen 16 is a novel target of the humoral autoimmune response in multiple sclerosis.", "author": "de Bock L, Somers K, Fraussen J, Hendriks JJ, van Horssen J, Rouwette M, Hellings N, Villar LM, Alvarez-Cermeño JC, Espiño M, Hupperts R, Jongen P, Damoiseaux J, Verbeek MM, De Deyn PP, D'hooghe M, Van Wijmeersch B, Stinissen P, Somers V.", "journal": "J Immunol. 2014 Sep 1;193(5):2147-56."}]

## DOCUMENTS

- [Data Sheet](#)

## GALLERY IMAGES

