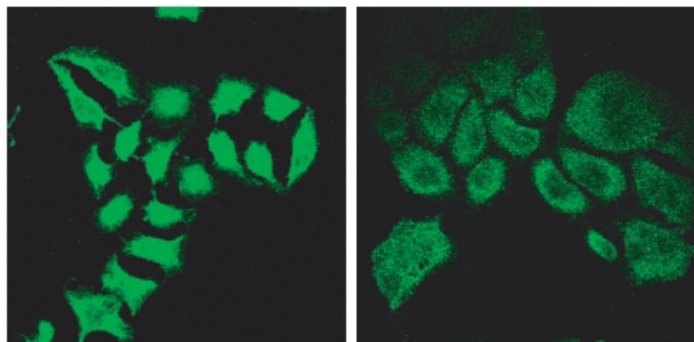


# GOAT ANTI-SPARTIN ANTIBODY

SKU: EB09136



## SPECIFICATIONS

**Formulation** Supplied at 0.5 mg/ml in Tris saline, 0.02% sodium azide, pH7.3 with 0.5% bovine serum albumin.

**Unit Size** 100 µg

**Storage Instructions** Aliquot and store at -20°C. Minimize freezing and thawing.

**Synonym / Alias Names** trans-activated by hepatitis C virus core protein 1|spastic paraplegia 20, spartin (Troyer syndrome)|spastic paraplegia 20|OTTHUMP00000018254|TAHCCP1|SPARTIN|KIAA0610|spastic paraplegia 20 (Troyer syndrome)|SPG20

**Usage Summary** **Immunofluorescence:** HeLa show diminished signals after knock down of expression by introduction of siRNA.

**Accession ID** NP\_055902.1

**Blocking Peptide** EBP09136

**Immunogen** Peptide with sequence C-EASGTDVKQLDQGNK, from the internal region of the protein sequence according to NP\_055902.1.

**Peptide Sequence** C-EASGTDVKQLDQGNK

**Purification Method** Purified from goat serum by ammonium sulphate precipitation followed by antigen affinity chromatography using the immunizing peptide.

**Shipping Instructions** Refrigerated

**Predicted Species** Human

**Reactive Species** Human

<b>Human Gene ID</b>	23111
<b>Product Grade</b>	<a href="https://prod-vector-labs-pimcore-assets.s3.us-east-1.amazonaws.com/assets/products/image/elite_medium.png">https://prod-vector-labs-pimcore-assets.s3.us-east-1.amazonaws.com/assets/products/image/elite_medium.png</a>
<b>ELISA Detection Limit</b>	Antibody detection limit dilution 1:8000.
<b>Western Blot</b>	Approx 70kDa band observed in lysates of cell line HeLa (calculated MW of 72.8kDa according to NP_055902.1). Recommended concentration: 1-3µg/ml.
<b>Application Type</b>	Pep-ELISA, WB, IF

## DOCUMENTS

- [Data Sheet](#)

## GALLERY IMAGES

