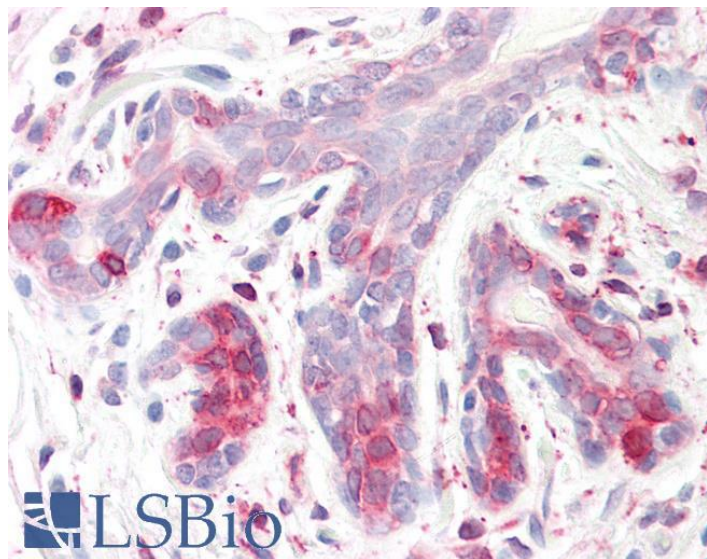


# GOAT ANTI-SPFH2 / ERLIN2 ANTIBODY

**SKU:** EB06896



## SPECIFICATIONS

<b>Formulation</b>	Supplied at 0.5 mg/ml in Tris saline, 0.02% sodium azide, pH7.3 with 0.5% bovine serum albumin.
<b>Unit Size</b>	100 µg
<b>Storage Instructions</b>	Aliquot and store at -20°C. Minimize freezing and thawing.
<b>Synonym / Alias Names</b>	MGC87072 Erlin-2 chromosome 8 open reading frame 2 MGC87072 C8orf2 HGNC:1356 SPFH domain family, member 2 ER lipid raft associated 2 SPFH2 ERLIN2
<b>Accession ID</b>	NP_009106.1
<b>Blocking Peptide</b>	EBP06896
<b>Immunogen</b>	Peptide with sequence C-EDEPLETATKEN, from the C Terminus of the protein sequence according to NP_009106.1.
<b>Product Comments</b>	This antibody is expected to recognise isoform 1 (NP_009106) only.
<b>Peptide Sequence</b>	C-EDEPLETATKEN
<b>Purification Method</b>	Purified from goat serum by ammonium sulphate precipitation followed by antigen affinity chromatography using the immunizing peptide.

<b>Shipping Instructions</b>	Refrigerated
<b>Predicted Species</b>	Human, Rat
<b>Reactive Species</b>	Human
<b>Human Gene ID</b>	11160
<b>Rat Gene ID</b>	290823
<b>Product Grade</b>	<a href="https://prod-vector-labs-pimcore-assets.s3.us-east-1.amazonaws.com/assets/products/image/elite_medium.png">https://prod-vector-labs-pimcore-assets.s3.us-east-1.amazonaws.com/assets/products/image/elite_medium.png</a>
<b>IHC Results</b>	Paraffin embedded Human Breast. Recommended concentration: 3.75µg/ml.
<b>ELISA</b>	
<b>Detection Limit</b>	Antibody detection limit dilution 1:2000.
<b>Western Blot</b>	Approx 43kDa band observed in Human Breast lysates and in lysates of Human Breast Cancer (calculated MW of 37.8kDa according to NP_009106.1). The observed molecular weight corresponds to earlier findings in literature with different antibodies (Pearce et al, J Biol Chem. 2007 Jul 13;282(28):20104-15.; PMID: 17502376). Recommended concentration: 0.3-1µg/ml.
<b>Application Type</b>	Pep-ELISA, WB, IHC

## DOCUMENTS

- [Data Sheet](#)

## GALLERY IMAGES

