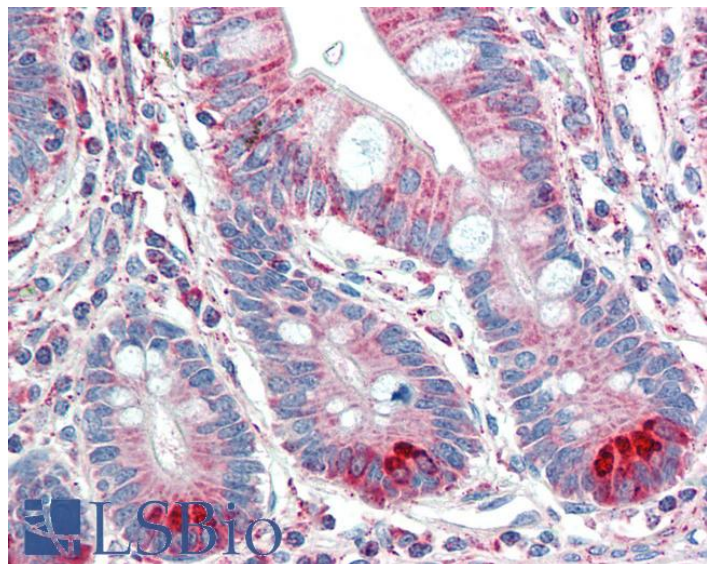


GOAT ANTI-SPINESIN / TMPRSS5 ANTIBODY

SKU: EB05341



SPECIFICATIONS

Formulation Supplied at 0.5 mg/ml in Tris saline, 0.02% sodium azide, pH7.3 with 0.5% bovine serum albumin.

Unit Size 100 µg

Storage Instructions Aliquot and store at -20°C. Minimize freezing and thawing.

Synonym /

Alias Names TMPRSS5|SPINESIN|transmembrane protease, serine 5 (spinesin)|MGC141886|MGC148044|SPINESIN

Accession ID NP_110397.2

Blocking Peptide EBP05341

Immunogen Peptide with sequence C-LDWIHDTAQDSLL, from the C Terminus of the protein sequence according to NP_110397.2.

Peptide Sequence C-LDWIHDTAQDSLL

Purification Method Purified from goat serum by ammonium sulphate precipitation followed by antigen affinity chromatography using the immunizing peptide.

Shipping Instructions Refrigerated

Predicted Species	Human, Dog
Reactive Species	Human
Human Gene ID	80975
Product Grade	https://prod-vector-labs-pimcore-assets.s3.us-east-1.amazonaws.com/assets/products/image/elite_medium.png
IHC Results	Paraffin embedded Human Liver and Small Intestine. Recommended concentration: 5µg/ml.
ELISA Detection Limit	Antibody detection limit dilution 1:32000.
Western Blot	Experiments gave bands at approx 50kDa and 29kDa in Human Brain (Cerebral Cortex). These bands correspond to earlier findings in literature with different antibodies (Yamaguchi et al, J Biol Chem. 2002 Mar 1;277(9):6806-12; PMID: 11741986). This protein has a calculated MW of 49.6kDa according to NP_110397.1. Recommended concentration: 0.5-1.5µg/ml.
Application Type	Pep-ELISA, WB, IHC

DOCUMENTS

- [Data Sheet](#)

GALLERY IMAGES

