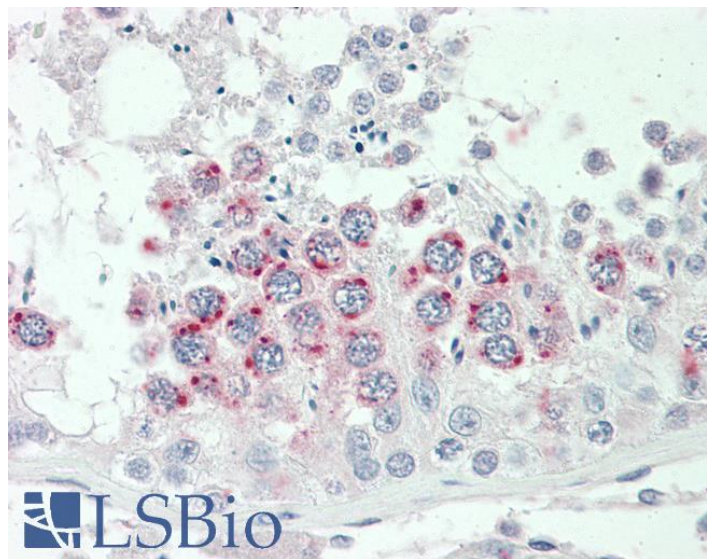


GOAT ANTI-SPINT2 ANTIBODY

SKU: EB10237



SPECIFICATIONS

Formulation Supplied at 0.5 mg/ml in Tris saline, 0.02% sodium azide, pH7.3 with 0.5% bovine serum albumin.

Unit Size 100 µg

Storage Instructions Aliquot and store at -20°C. Minimize freezing and thawing.

Synonym / Alias Names SPINT2|serine protease inhibitor, Kunitz type, 2|serine peptidase inhibitor, Kunitz type, 2|placental bikunin|PB|Kop|hepatocyte growth factor activator inhibitor type 2|HAI-2|HAI2|FLJ45571|DIAR3

Accession ID NP_066925.1; NP_001159575.1

Blocking Peptide EBP10237

Immunogen Peptide with sequence C-PSAPRRQDSEDH, from the internal region of the protein sequence according to NP_066925.1; NP_001159575.1.

Product Comments This antibody is expected to recognize both reported isoforms (NP_066925.1; NP_001159575.1).

Peptide Sequence C-PSAPRRQDSEDH

Purification Method Purified from goat serum by ammonium sulphate precipitation followed by antigen affinity chromatography using the immunizing peptide.

Shipping Instructions	Refrigerated
Predicted Species	Human
Reactive Species	Human
Human Gene ID	10653
Product Grade	https://prod-vector-labs-pimcore-assets.s3.us-east-1.amazonaws.com/assets/products/image/elite_medium.png
IHC Results	Paraffin embedded Human Testis. Recommended concentration: 3.75µg/ml.
ELISA	
Detection Limit	Antibody detection limit dilution 1:16000.
Western Blot	Approx 19kDa band observed in Human Placenta lysates (calculated MW of 21.8kDa according to NP_001159575.1). Recommended concentration: 0.3-1µg/ml. Primary incubation was 1 hour.
Application Type	Pep-ELISA, WB, IHC

DOCUMENTS

- [Data Sheet](#)

GALLERY IMAGES

