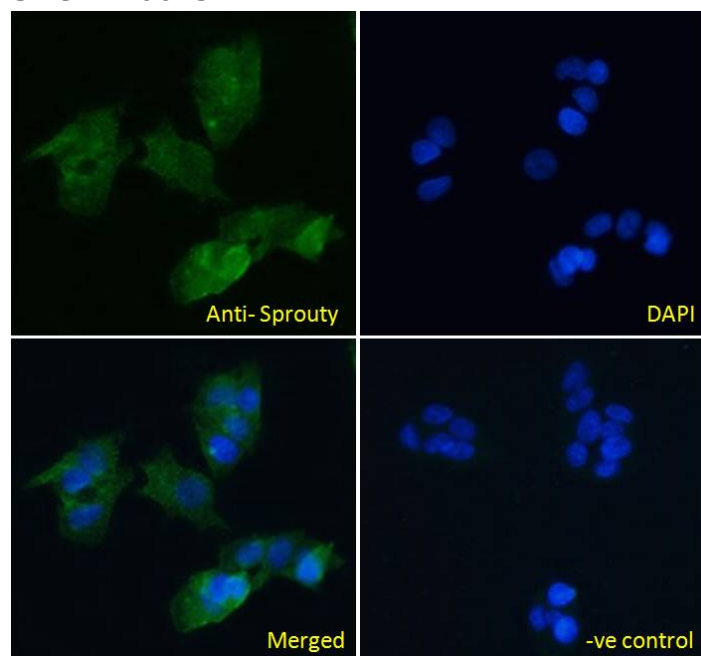


# GOAT ANTI-SPROUTY ANTIBODY

SKU: EB06432



## SPECIFICATIONS

<b>Formulation</b>	Supplied at 0.5 mg/ml in Tris saline, 0.02% sodium azide, pH7.3 with 0.5% bovine serum albumin.
<b>Unit Size</b>	100 µg
<b>Storage Instructions</b>	Aliquot and store at -20°C. Minimize freezing and thawing.
<b>Synonym / Alias Names</b>	sprouty, Drosophila, homolog of, 1 (antagonist of FGF signaling) sprouty (Drosophila) homolog 1 (antagonist of FGF signaling) sprouty homolog 1, antagonist of FGF signaling (Drosophila) hSPRY1 SPRY1
<b>Usage Summary</b>	<strong>Immunofluorescence:</strong> Strong expression of the protein seen in the cytoplasm and Golgi apparatus of HeLa and HepG2 cells. Recommended concentration: 10µg/ml. <strong>Flow Cytometry:</strong> Flow cytometric analysis of HEK293 cells. Recommended concentration: 10ug/ml.
<b>Accession ID</b>	NP_005832.1; NP_955359.1
<b>Blocking Peptide</b>	EBP06432
<b>Immunogen</b>	Peptide with sequence CPSRGQGKPS, from the C Terminus of the protein sequence according to NP_005832.1; NP_955359.1.

<b>Product Comments</b>	NP_005832.1 and NP_955359.1 represent variants of the same protein.
<b>Peptide Sequence</b>	CPSRGQGKPS
<b>Purification Method</b>	Purified from goat serum by ammonium sulphate precipitation followed by antigen affinity chromatography using the immunizing peptide.
<b>Shipping Instructions</b>	Refrigerated
<b>Predicted Species</b>	Human
<b>Reactive Species</b>	Human, Mouse
<b>Human Gene ID</b>	10252
<b>Product Grade</b>	<a href="https://prod-vector-labs-pimcore-assets.s3.us-east-1.amazonaws.com/assets/products/image/elite_plus_medium.png">https://prod-vector-labs-pimcore-assets.s3.us-east-1.amazonaws.com/assets/products/image/elite_plus_medium.png</a>
<b>IHC Results</b>	This product has been successfully used by customers in paraffin embedded Mouse Brain, showing nuclear staining. Recommended concentration: 1-3µg/ml.
<b>ELISA Detection Limit</b>	Antibody detection limit dilution 1:16000.
<b>Western Blot</b>	Approx 37kDa band observed in Human Kidney lysates (calculated MW of 35.1kDa according to NP_005832.1 ). Recommended concentration: 0.3-1µg/ml. Primary incubation 1 hour at room temperature. This product has been successfully used in ERMS cells (PMID: 20068162). Recommended concentration: 1-3µg/ml.
<b>Application Type</b>	Pep-ELISA, WB, IF, FC, IHC

## DOCUMENTS

- [Data Sheet](#)

## GALLERY IMAGES

