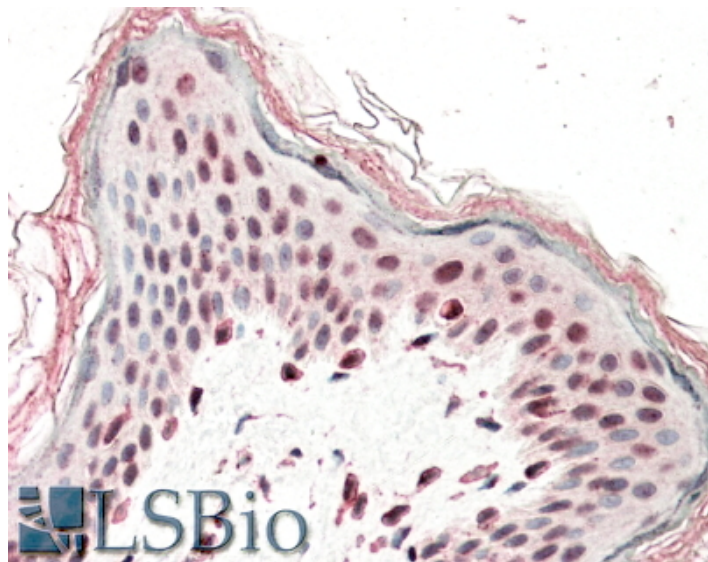


GOAT ANTI-SRCAP (AA309-322) ANTIBODY

SKU: EB11094



SPECIFICATIONS

Formulation Supplied at 0.5 mg/ml in Tris saline, 0.02% sodium azide, pH7.3 with 0.5% bovine serum albumin.

Unit Size 100 µg

Storage Instructions Aliquot and store at -20°C. Minimize freezing and thawing.

Synonym / Alias Names domino homolog 1| domino homolog 2| DOMO1| EAF1| FLJ44499| helicase SRCAP| KIAA0309| OTTHUMP00000208671| Snf2-related CBP activator protein| Snf2-related CREBBP activator protein| Swi2/Snf2-related ATPase homolog, domino homolog 1| SWR1|SRCAP

Accession ID NP_006653.2

Blocking Peptide EBP11094

Immunogen Peptide with sequence C-QEGNDAEAQRREIE, from the internal region (near N Trminus) of the protein sequence according to NP_006653.2.

Peptide Sequence C-QEGNDAEAQRREIE

Purification Method Purified from goat serum by ammonium sulphate precipitation followed by antigen affinity chromatography using the immunizing peptide.

Shipping Instructions Refrigerated

Predicted Species	Human, Mouse, Rat, Dog, Pig
Reactive Species	Human
Human Gene ID	10847
Mouse Gene ID	100043597
Rat Gene ID	361652
Product Grade	https://prod-vector-labs-pimcore-assets.s3.us-east-1.amazonaws.com/assets/products/image/elite_medium.png
IHC Results	In paraffin embedded Human Skin shows nuclear staining in some keratinocytes. Recommended concentration: 5-10µg/ml.
ELISA	
Detection Limit	Antibody detection limit dilution 1:128000.
Application Type	Pep-ELISA, IHC

DOCUMENTS

- [Data Sheet](#)

GALLERY IMAGES

