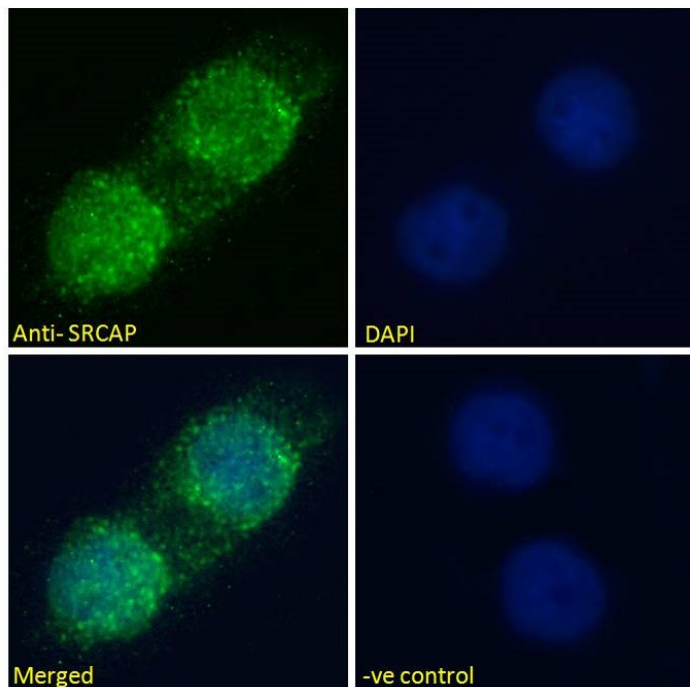


GOAT ANTI-SRCAP ANTIBODY

SKU: EB09659



SPECIFICATIONS

Formulation Supplied at 0.5 mg/ml in Tris saline, 0.02% sodium azide, pH7.3 with 0.5% bovine serum albumin.

Unit Size 100 µg

Storage Instructions Aliquot and store at -20°C. Minimize freezing and thawing.

Synonym / Alias Swi2/Snf2-related ATPase homolog, domino homolog 1|Snf2-related CBP activator protein|OTTHUMP00000163226|SWR1|KIAA0309|FLJ44499|EAF1|DOMO1|Snf2-related CREBBP activator protein|SRCAP

Usage Immunofluorescence: Strong expression of the protein seen in the Nucleus of A31 cells.

Summary Recommended concentration: 10µg/ml.

Accession ID NP_006653.2

Blocking Peptide EBP09659

Immunogen Peptide with sequence C-DEAQNKNFKSQR, from the internal region of the protein sequence according to NP_006653.2.

Peptide Sequence	C-DEAQNKNFKSQR
Purification Method	Purified from goat serum by ammonium sulphate precipitation followed by antigen affinity chromatography using the immunizing peptide.
Shipping Instructions	Refrigerated
Predicted Species	Human, Mouse, Rat, Dog
Reactive Species	Human
Human Gene ID	10847
Mouse Gene ID	100043597
Rat Gene ID	361652
Product Grade	https://prod-vector-labs-pimcore-assets.s3.us-east-1.amazonaws.com/assets/products/image/elite_medium.png
ELISA Detection Limit	Antibody detection limit dilution 1:8000.
Western Blot	Not yet tested - our routine western blotting protocol does not allow for the detection of proteins >250kDa (calculated size of approx. 344kDa according to NP_006653.2).
Application Type	Pep-ELISA, IF

DOCUMENTS

- [Data Sheet](#)

GALLERY IMAGES

