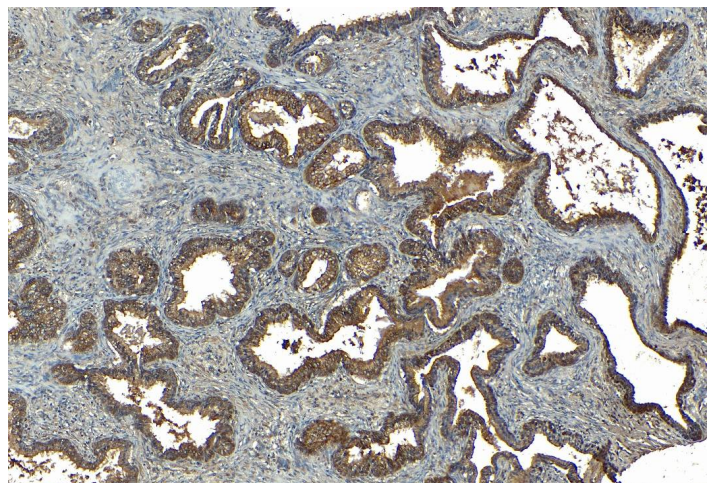


GOAT ANTI-SRD5A1 ANTIBODY

SKU: EB09209



SPECIFICATIONS

Formulation Supplied at 0.5 mg/ml in Tris saline, 0.02% sodium azide, pH7.3 with 0.5% bovine serum albumin.

Unit Size 100 µg

Storage Instructions Aliquot and store at -20°C. Minimize freezing and thawing.

Synonym / Alias Names steroid-5-alpha-reductase|steroid 5-alpha-reductase type I|OTTHUMP00000115519|5-alpha reductase|3-oxo-5 alpha-steroid delta 4-dehydrogenase alpha 1|steroid-5-alpha-reductase, alpha polypeptide 1 (3-oxo-5 alpha-steroid delta 4-dehydrogenase alpha 1)|SRD5A1

Accession ID NP_001038.1

Blocking Peptide EBP09209

Immunogen Peptide with sequence C-RNLRKPGDTGYK, from the internal region of the protein sequence according to NP_001038.1.

Peptide Sequence C-RNLRKPGDTGYK

Purification Method Purified from goat serum by ammonium sulphate precipitation followed by antigen affinity chromatography using the immunizing peptide.

Shipping Instructions Refrigerated

Predicted Species Human

Reactive Species	Human
Human Gene ID	6715
Mouse Gene ID	78925
Product Grade	https://prod-vector-labs-pimcore-assets.s3.us-east-1.amazonaws.com/assets/products/image/elite_medium.png
IHC Results	Paraffin embedded Human Prostate and Kidney. Recommended concentration: 5-7µg/ml.
ELISA	
Detection Limit	Antibody detection limit dilution 1:32000.
Application Type	Pep-ELISA, IHC

DOCUMENTS

- [Data Sheet](#)

GALLERY IMAGES

