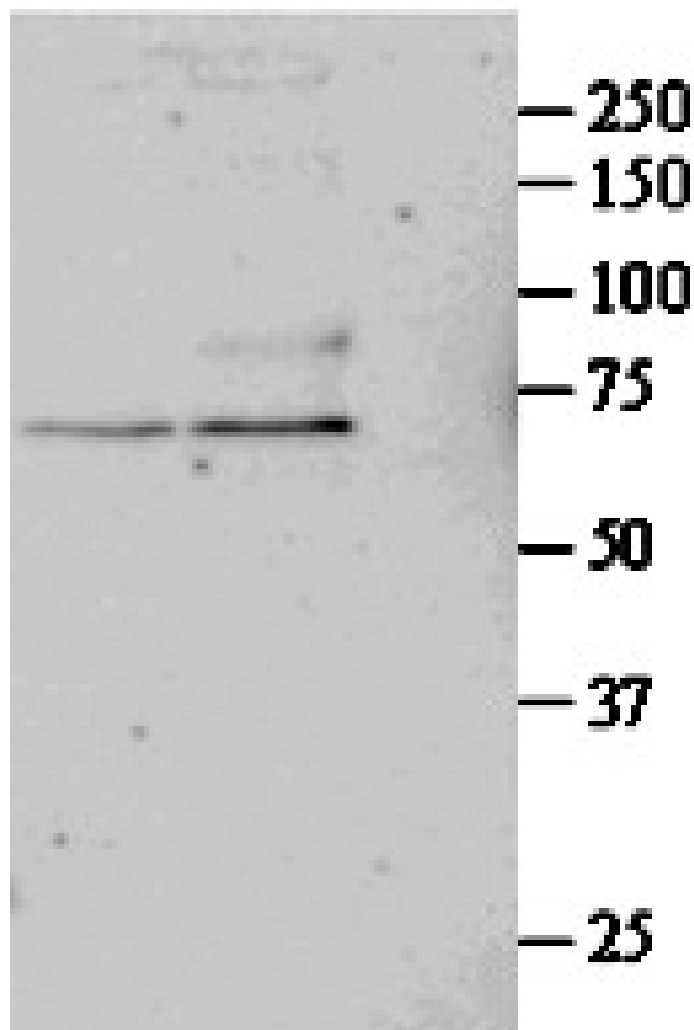


GOAT ANTI-SRF ANTIBODY

SKU: EB09543

— +



SPECIFICATIONS

Formulation Supplied at 0.5 mg/ml in Tris saline, 0.02% sodium azide, pH7.3 with 0.5% bovine serum albumin.

Unit Size 100 µg

Storage Instructions	Aliquot and store at -20°C. Minimize freezing and thawing.
Synonym / Alias Names	OTTHUMP00000039820 MCM1 serum response factor (c-fos serum response element-binding transcription factor) SRF
Accession ID	NP_003122.1
Blocking Peptide	EBP09543
Immunogen	Peptide with sequence C-QASPSRDSSTDLTQ, from the internal region of the protein sequence according to NP_003122.1.
Peptide Sequence	C-QASPSRDSSTDLTQ
Purification Method	Purified from goat serum by ammonium sulphate precipitation followed by antigen affinity chromatography using the immunizing peptide.
Shipping Instructions	Refrigerated
Predicted Species	Human, Mouse, Dog, Cow
Reactive Species	Human
Human Gene ID	6722
Mouse Gene ID	20807
Rat Gene ID	501099
Product Grade	https://prod-vector-labs-pimcore-assets.s3.us-east-1.amazonaws.com/assets/products/image/elite_medium.png
ELISA Detection Limit	Antibody detection limit dilution 1:32000.
Western Blot	Approx 67kDa band observed in primary cultured Human Lung fibroblasts lysates after 24 h treatment with 1ng/ml TGF- β 1 (calculated MW of 51.6kDa according to NP_003122.1). The observed molecular weight corresponds to earlier findings in literature with different antibodies (Davis FJ et al, Am J Physiol Heart Circ Physiol. 2002 Apr;282(4):H1521-33.; PMID: 11893590). Recommended concentration: 1-3 μ g/ml.
Application Type	Pep-ELISA, WB

DOCUMENTS

- [Data Sheet](#)

GALLERY IMAGES

