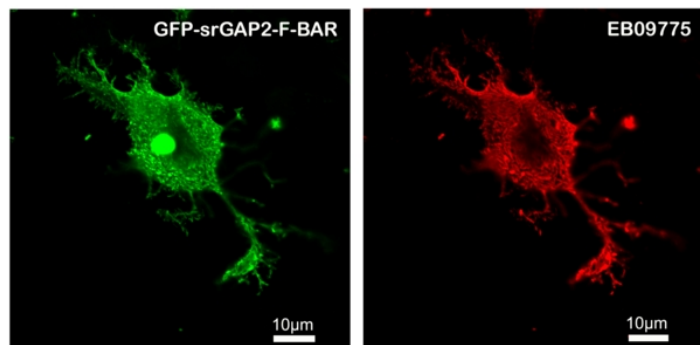


GOAT ANTI-SRGAP2 ANTIBODY

SKU: EB09775



SPECIFICATIONS

Formulation Supplied at 0.5 mg/ml in Tris saline, 0.02% sodium azide, pH7.3 with 0.5% bovine serum albumin.

Unit Size 100 µg

Storage Instructions Aliquot and store at -20°C. Minimize freezing and thawing.

Synonym /

Alias Names srGAP3|SLIT-ROBO Rho GTPase activating protein 2|KIAA0456|formin binding protein 2|FNBP2|SRGAP2

Usage Summary **Immunofluorescence:** Transfected HEK293 transiently expressing GFP-tagged Human srGAP2 with the primary antibody stained in the red channel (Confocal IF).

Accession ID NP_056141.2

Blocking Peptide EBP09775

Immunogen Peptide with sequence C-KQEDRQTPRSPDST, from the internal region of the protein sequence according to NP_056141.2.

Product Comments This antibody is expected to recognize isoform a (NP_056141.2).

Peptide Sequence C-KQEDRQTPRSPDST

Purification Method Purified from goat serum by ammonium sulphate precipitation followed by antigen affinity chromatography using the immunizing peptide.

Shipping Instructions Refrigerated

Predicted Species Human, Mouse, Rat, Dog, Cow

Reactive Species	Human
Human Gene ID	23380
Mouse Gene ID	14270
Rat Gene ID	360840
Product Grade	https://prod-vector-labs-pimcore-assets.s3.us-east-1.amazonaws.com/assets/products/image/elite_medium.png
ELISA Detection Limit	Antibody detection limit dilution 1:8000.
Western Blot	Approx 124kDa band observed in lysates of cell line HeLa and in rat primary culture cortical neurons at Day 4 (calculated MW of 121kDa according to human NP_056141.2 but the rat protein sequence is still provisional). Recommended concentration: 0.1-0.3µg/ml.
Application Type	Pep-ELISA, WB, IF

DOCUMENTS

- [Data Sheet](#)

GALLERY IMAGES

