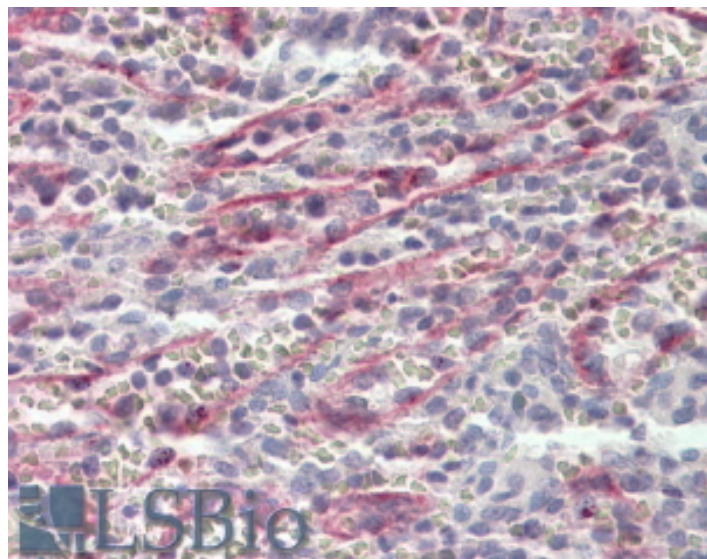


GOAT ANTI-STABILIN 1 ANTIBODY

SKU: EB09863



SPECIFICATIONS

Formulation	Supplied at 0.5 mg/ml in Tris saline, 0.02% sodium azide, pH7.3 with 0.5% bovine serum albumin.
Unit Size	100 µg
Storage	Aliquot and store at -20°C. Minimize freezing and thawing.
Instructions	
Synonym / Alias	STAB1 stabilin 1 STAB-1 MS-1 antigen KIAA0246 FEX1 FELE-1 FEEL-1 fasciclin egf-like, laminin-type egf-like, and link domain-containing scavenger receptor-1 common lymphatic endothelial and vascular endothelial
Names	receptor-1 CLEVER-1
Accession ID	NP_055951.2
Blocking Peptide	EBP09863
Immunogen	Peptide with sequence C-DFPDTQRILTVK, from the C Terminus of the protein sequence according to NP_055951.2.
Peptide Sequence	C-DFPDTQRILTVK
Purification Method	Purified from goat serum by ammonium sulphate precipitation followed by antigen affinity chromatography using the immunizing peptide.
Shipping Instructions	Refrigerated

Predicted Species	Human, Dog, Cow, Pig
Reactive Species	Human
Human Gene ID	23166
Product Grade	https://prod-vector-labs-pimcore-assets.s3.us-east-1.amazonaws.com/assets/products/image/elite_medium.png
IHC Results	In paraffin embedded Human Spleen shows endothelial staining. Recommended concentration, 3-5µg/ml.
ELISA	
Detection Limit	Antibody detection limit dilution 1:8000.
Application Type	Pep-ELISA, IHC

DOCUMENTS

- [Data Sheet](#)

GALLERY IMAGES

