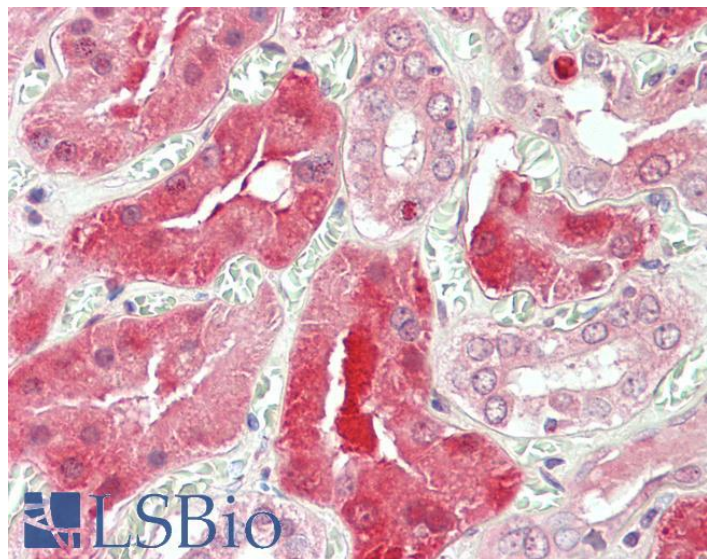


GOAT ANTI-STAT3 ANTIBODY

SKU: EB07379



SPECIFICATIONS

Formulation	Supplied at 0.5 mg/ml in Tris saline, 0.02% sodium azide, pH7.3 with 0.5% bovine serum albumin.
Unit Size	100 µg
Storage Instructions	Aliquot and store at -20°C. Minimize freezing and thawing.
Synonym / Alias Names	signal transducer and activator of transcription 3 acute-phase response factor DNA-binding protein APRF MGC16063 FLJ20882 APRF signal transducer and activator of transcription 3 (acute-phase response factor) STAT3
Usage Summary	Flow Cytometry: Flow cytometric analysis of K562 cells. Recommended concentration: 10ug/ml
Accession ID	NP_644805.1; NP_003141.2; NP_998827.1
Blocking Peptide	EBP07379
Immunogen	Peptide with sequence CRPESQEHPEADP, from the internal region of the protein sequence according to NP_644805.1; NP_003141.2; NP_998827.1.
Product Comments	This antibody is expected to recognise all three reported isoforms (NP_644805.1, NP_003141.2 and NP_998827.1).
Peptide Sequence	CRPESQEHPEADP

Purification Method	Purified from goat serum by ammonium sulphate precipitation followed by antigen affinity chromatography using the immunizing peptide.
Shipping Instructions	Refrigerated
Predicted Species	Human, Mouse, Rat, Dog
Reactive Species	Human, Mouse
Human Gene ID	6774
Mouse Gene ID	20848
Rat Gene ID	25125
Product Grade	https://prod-vector-labs-pimcore-assets.s3.us-east-1.amazonaws.com/assets/products/image/elite_plus_medium.png
IHC Results	Paraffin embedded Human Kidney. Recommended concentration: 5µg/ml.
ELISA	
Detection Limit	Antibody detection limit dilution 1:16000.
Western Blot	Approx 85kDa band observed in lysates of cell line LNCaP, and approx. 90kDa in Mouse Heart lysates (calculated MW of 83.1kDa according to Human NP_998827.1 and 88.1kDa according to Mouse : NP_998824.1). Recommended concentration: 0.5-3ug/ml. Primary incubation 1 hour. at room temperature.
Application Type	Pep-ELISA, WB, IHC, FC

DOCUMENTS

- [Data Sheet](#)

GALLERY IMAGES

