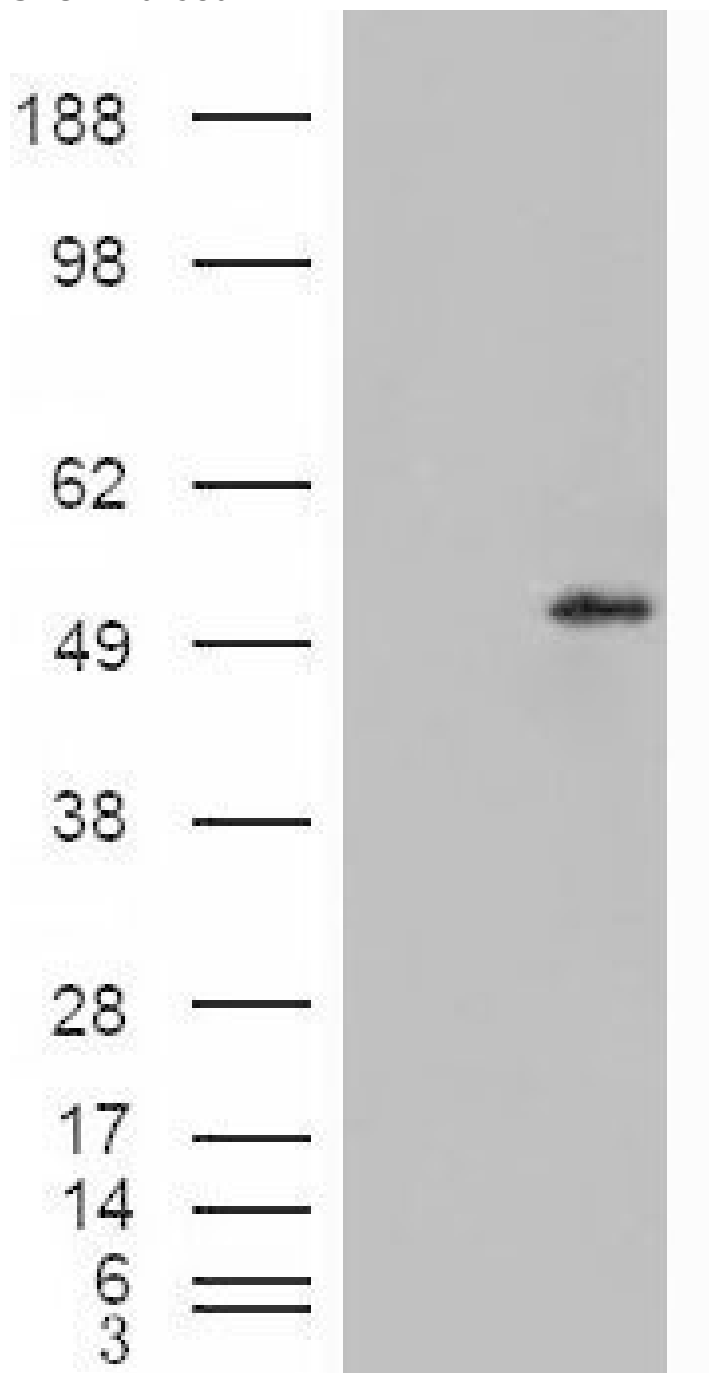


GOAT ANTI-STEAP4 / DUDULIN4 ANTIBODY

SKU: EB07980



SPECIFICATIONS

Formulation	Supplied at 0.5 mg/ml in Tris saline, 0.02% sodium azide, pH7.3 with 0.5% bovine serum albumin.
Unit Size	100 µg
Storage	
Instructions	Aliquot and store at -20°C. Minimize freezing and thawing.
Synonym / Alias	tumor necrosis-alpha-induced adipose-related protein tumor necrosis factor, alpha-induced protein 9 six
Names	transmembrane prostate protein 2 TNFAIP9 TIARP STAMP2 FLJ23153 DKFZp666D049 STEAP family member 4
Accession ID	NP_078912.2
Blocking Peptide	EBP07980
Immunogen	Peptide with sequence CVDNTLTRIRQGWERN, from the C Terminus of the protein sequence according to NP_078912.2.
Peptide Sequence	CVDNTLTRIRQGWERN
Purification Method	Purified from goat serum by ammonium sulphate precipitation followed by antigen affinity chromatography using the immunizing peptide.
Shipping Instructions	Refrigerated
Predicted Species	Human, Mouse, Rat, Dog
Reactive Species	Human
Human Gene ID	79689
Mouse Gene ID	117167
Product Grade	https://prod-vector-labs-pimcore-assets.s3.us-east-1.amazonaws.com/assets/products/image/elite_medium.png
ELISA	
Detection Limit	Antibody detection limit dilution 1:4000.
Western Blot	Approx. 50-55kDa band observed in Human Adipose lysates (calculated MW of 52.0kDa according to NP_078912.2). In transfected HEK293 transiently expressing Human Dudulin4 a band of approx. 52kDa is observed. This band is not observed in the non-transfected HEK293. Recommended concentration: 0.3-1µg/ml.
Application Type	Pep-ELISA, WB

DOCUMENTS

- [Data Sheet](#)

GALLERY IMAGES

