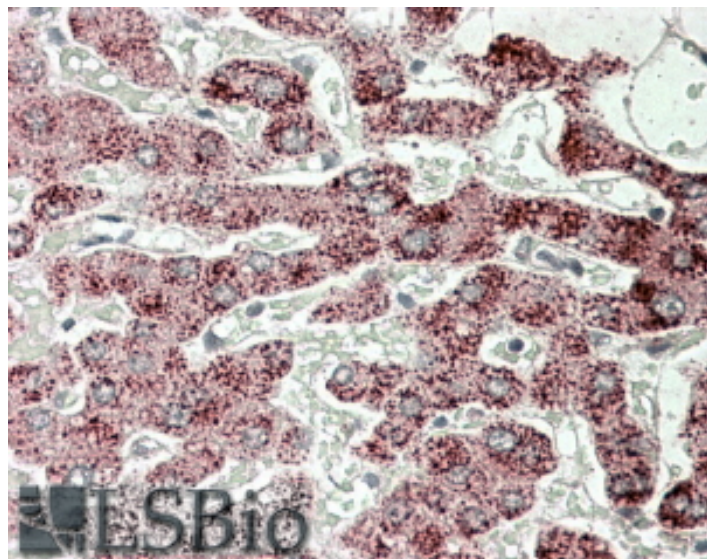


GOAT ANTI-STEROL CARRIER PROTEIN 2 ANTIBODY

SKU: EB08546



SPECIFICATIONS

Formulation	Supplied at 0.5 mg/ml in Tris saline, 0.02% sodium azide, pH7.3 with 0.5% bovine serum albumin.
Unit Size	100 µg
Storage Instructions	Aliquot and store at -20°C. Minimize freezing and thawing.
Synonym / Alias Names	SCP2 sterol carrier protein 2 DKFZp686C12188 DKFZp686D11188 NLTP NSL-TP SCPX nonspecific lipid-transfer protein sterol carrier protein X
Accession ID	NP_001007099.1; NP_002970.2; NP_001180528.1; NP_001180529.1; NP_001180546.1
Blocking Peptide	EBP08546
Immunogen	Peptide with sequence C-KNHKHSVNNPYSQ, from the internal region of the protein sequence according to NP_001007099.1; NP_002970.2; NP_001180528.1; NP_001180529.1; NP_001180546.1.
Product Comments	This antibody is expected to recognize isoform 1, 2, 6, 7 and 8 (NP_002970.2; NP_001007099.1; NP_001180529.1; NP_001180528.1; NP_001180546.1 respectively),
Peptide Sequence	C-KNHKHSVNNPYSQ
Purification Method	Purified from goat serum by ammonium sulphate precipitation followed by antigen affinity chromatography using the immunizing peptide.

Shipping Instructions	Refrigerated
Predicted Species	Human, Mouse, Rat, Dog, Pig, Cow
Reactive Species	Human
Human Gene ID	6342
Mouse Gene ID	20280
Rat Gene ID	25541
Product Grade	https://prod-vector-labs-pimcore-assets.s3.us-east-1.amazonaws.com/assets/products/image/elite_medium.png
IHC Results	In paraffin embedded Human Liver shows speckled cytoplasm staining in hepatocytes. Recommended concentration, 3-6µg/ml.
ELISA Detection Limit	Antibody detection limit dilution 1:32000.
Western Blot	Preliminary experiments gave an approx 50kDa band in Human Liver lysates after 0.3µg/ml antibody staining. Please note that currently we cannot find an explanation in the literature for the band we observe given the calculated size of 59.0kDa according to NP_001007099.1 and of 6.7kDa according to NP_002970.2. The 28kDa band was successfully blocked by incubation with the immunizing peptide. We would appreciate any feedback from people in the field - have any results been reported with other antibodies/lysates? Have any further splice variants/modified forms been reported?
Application Type	Pep-ELISA, IHC

DOCUMENTS

- [Data Sheet](#)

GALLERY IMAGES

