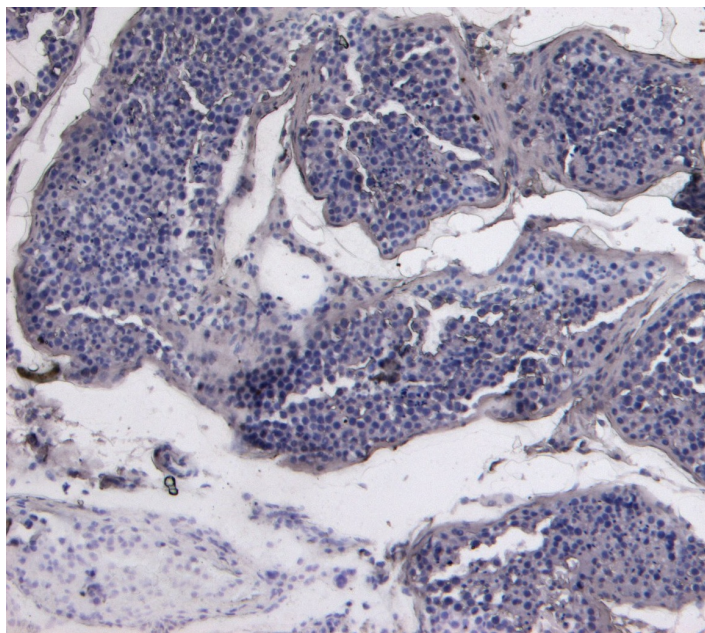


# GOAT ANTI-STK39 / SPAK ANTIBODY

**SKU:** EB09416



## SPECIFICATIONS

**Formulation** Supplied at 0.5 mg/ml in Tris saline, 0.02% sodium azide, pH7.3 with 0.5% bovine serum albumin.

**Unit Size** 100 µg

**Storage Instructions** Aliquot and store at -20°C. Minimize freezing and thawing.

**Synonym / Alias Names** small intestine SPAK-like kinase|proline-alanine-rich STE20-related kinase|Ste20-like protein kinase|SPAK|PASK|DKFZp686K05124|DCHT|serine threonine kinase 39 (STE20/SPS1 homolog, yeast)|STK39

**Accession ID** NP\_037365.2

**Blocking Peptide** EBP09416

**Immunogen** Peptide with sequence C-SQEKSRRVKEENPE, from the internal region of the protein sequence according to NP\_037365.2.

**Peptide Sequence** C-SQEKSRRVKEENPE

**Purification Method** Purified from goat serum by ammonium sulphate precipitation followed by antigen affinity chromatography using the immunizing peptide.

<b>Shipping Instructions</b>	Refrigerated
<b>Predicted Species</b>	Human, Mouse, Rat, Dog
<b>Reactive Species</b>	Human
<b>Human Gene ID</b>	27347
<b>Mouse Gene ID</b>	53416
<b>Rat Gene ID</b>	54348
<b>Product Grade</b>	<a href="https://prod-vector-labs-pimcore-assets.s3.us-east-1.amazonaws.com/assets/products/image/elite_medium.png">https://prod-vector-labs-pimcore-assets.s3.us-east-1.amazonaws.com/assets/products/image/elite_medium.png</a>
<b>IHC Results</b>	Paraffin embedded Human Testis. Recommended concentration: 6µg/ml.
<b>ELISA</b>	
<b>Detection Limit</b>	Antibody detection limit dilution 1:4000.
<b>Western Blot</b>	Approx 65kDa band observed in Human Brain (Cerebellum) lysate (calculated MW of 59.5kDa according to NP_037365.2). The observed molecular weight corresponds to earlier findings with different antibodies from other commercial sources. Recommended concentration: 0.3-1µg/ml.
<b>Application Type</b>	Pep-ELISA, WB, IHC

## DOCUMENTS

- [Data Sheet](#)

## GALLERY IMAGES

