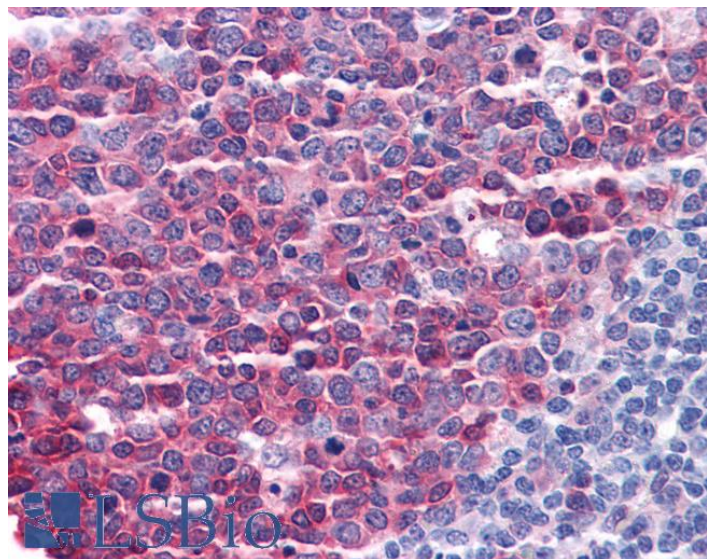


GOAT ANTI-STMN1 / STATHMIN 1 ANTIBODY

SKU: EB07115



SPECIFICATIONS

Formulation	Supplied at 0.5 mg/ml in Tris saline, 0.02% sodium azide, pH7.3 with 0.5% bovine serum albumin.
Unit Size	100 µg
Storage Instructions	Aliquot and store at -20°C. Minimize freezing and thawing.
Synonym / Alias Names	stathmin 1 variant stathmin 1 prosoin phosphoprotein 19 oncoprotein 18 metablastin leukemia-associated phosphoprotein p18 Pr22 protein SMN PR22 PP19 PP17 OP18 Lag LAP18 stathmin 1 oncoprotein 18 STMN1
Usage Summary	ELISA: This antibody has been successfully used in ELISA as described in the following paper: Song et al, Aging Cell. 2010 Aug;9(4):607-15; PMID: 20560902.
Accession ID	NP_005554.1; NP_981944.1; NP_981946.1
Blocking Peptide	EBP07115
Immunogen	Peptide with sequence C-KNKESKDPADETead, from the C Terminus of the protein sequence according to NP_005554.1; NP_981944.1; NP_981946.1.
Product Comments	This antibody is expected to cross-react with isoform 1 a (NP_005554.1; NP_981944.1; NP_981946.1) only. The three reported isoforms (NP_005554.1, NP_981944.1 and NP_981946.1) represent identical protein.
Peptide Sequence	C-KNKESKDPADETead

Purification Method	Purified from goat serum by ammonium sulphate precipitation followed by antigen affinity chromatography using the immunizing peptide.
Shipping Instructions	Refrigerated
Predicted Species	Human, Mouse, Rat
Reactive Species	Human, Mouse
Human Gene ID	3925
Product Grade	https://prod-vector-labs-pimcore-assets.s3.us-east-1.amazonaws.com/assets/products/image/elite_plus_medium.png
IHC Results	Paraffin embedded Human Thymus and Tonsil. Recommended concentration: 3.75µg/ml.
ELISA Detection Limit	Antibody detection limit dilution 1:1000.
Western Blot	Approx 17kDa band observed in Human Testis and Mouse Brain lysates (calculated MW of 17.3kDa according to NP_005554.1, NP_981944.1 and NP_981946.1). Recommended concentration: 1-3µg/ml.
Application Type	Pep-ELISA, WB, EIA, IHC

SELECTED REFERENCES

[{"pmid": 22323746, "intro": "**This antibody has been successfully used in the following paper:**", "title": "Chitinase enzyme activity in CSF is a powerful biomarker of Alzheimer disease.", "author": "Watabe-Rudolph M, Song Z, Lausser L, Schnack C, Begus-Nahrman Y, Scheithauer MO, Rettinger G, Otto M, Tumani H, Thal DR, Attems J, Jellinger KA, Kestler HA, von Arnim CA, Rudolph KL.", "journal": "Neurology. 2012 Feb 21;78(8):569-77."}, {"pmid": 20560902, "intro": "**This antibody has been successfully used in ELISA:**", "title": "Lifestyle impacts on the aging-associated expression of biomarkers of DNA damage and telomere dysfunction in human blood.", "author": "Song Z, von Figura G, Liu Y, Kraus JM, Torrice C, Dillon P, Rudolph-Watabe M, Ju Z, Kestler HA, Sanoff H, Lenhard Rudolph K.", "journal": "Aging Cell. 2010 Aug;9(4):607-15."}]

DOCUMENTS

- [Data Sheet](#)

GALLERY IMAGES

