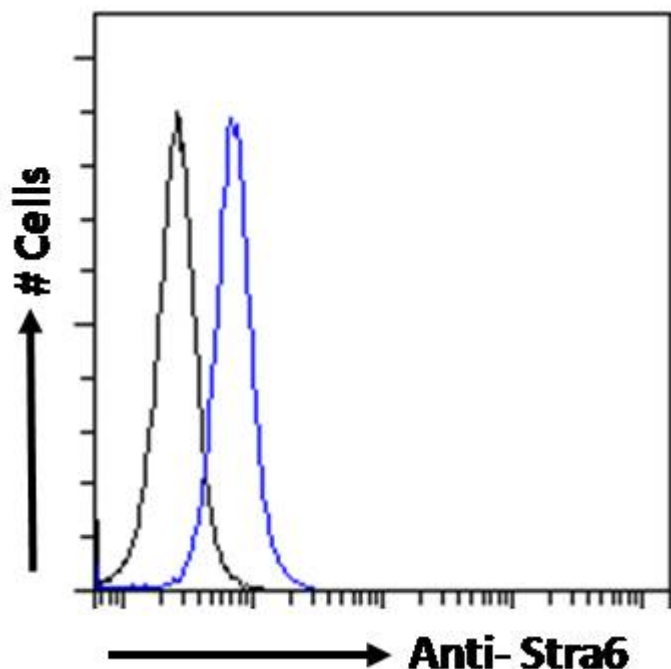


# GOAT ANTI-STRA6 (MOUSE, AA187-199) ANTIBODY

SKU: EB11495



## SPECIFICATIONS

**Formulation** Supplied at 0.5 mg/ml in Tris saline, 0.02% sodium azide, pH7.3 with 0.5% bovine serum albumin.

**Unit Size** 100 µg

**Storage Instructions** Aliquot and store at -20°C. Minimize freezing and thawing.

**Synonym / Alias Names** A1891933|retinoic acid-responsive protein|stimulated by retinoic acid gene 6|stimulated by retinoic acid gene 6 protein|Stra6

**Usage Summary** **Immunofluorescence:** Strong expression of the protein seen in the cytoplasm/ membranes of NIH3T3 cells. Recommended concentration: 10µg/ml. **Flow Cytometry:** Flow cytometric analysis of NIH3T3 cells. Recommended concentration: 10ug/ml.

**Accession ID** NP\_033317.2

**Blocking Peptide** EBP11495

<b>Immunogen</b>	Peptide with sequence QVWQKAECQDPK, from the internal region of the protein sequence according to NP_033317.2.
<b>Product</b>	Reported variants represent identical protein: NP_033317.2, NP_001155947.1; NP_001155948.1;
<b>Comments</b>	NP_001155951.1
<b>Peptide Sequence</b>	QVWQKAECQDPK
<b>Purification Method</b>	Purified from goat serum by ammonium sulphate precipitation followed by antigen affinity chromatography using the immunizing peptide.
<b>Shipping Instructions</b>	Refrigerated
<b>Predicted Species</b>	Mouse, Rat
<b>Reactive Species</b>	Mouse
<b>Mouse Gene ID</b>	20897
<b>Rat Gene ID</b>	363071
<b>Product Grade</b>	<a href="https://prod-vector-labs-pimcore-assets.s3.us-east-1.amazonaws.com/assets/products/image/elite_medium.png">https://prod-vector-labs-pimcore-assets.s3.us-east-1.amazonaws.com/assets/products/image/elite_medium.png</a>
<b>ELISA</b>	
<b>Detection Limit</b>	Antibody detection limit dilution 1:128000.
<b>Application Type</b>	Pep-ELISA, IF, FC

## DOCUMENTS

- [Data Sheet](#)

## GALLERY IMAGES

