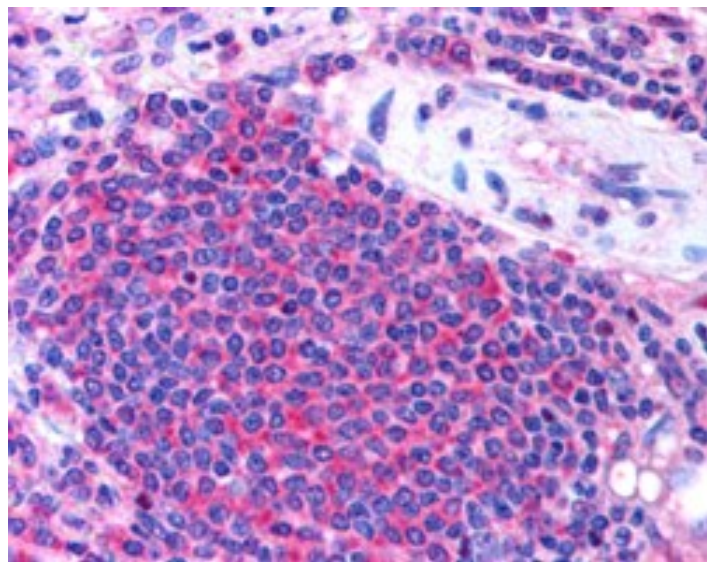


# GOAT ANTI-STS2 / TULA (INTERNAL) ANTIBODY

**SKU:** EB07594



## SPECIFICATIONS

**Formulation** Supplied at 0.5 mg/ml in Tris saline, 0.02% sodium azide, pH7.3 with 0.5% bovine serum albumin.

**Unit Size** 100 µg

**Storage Instructions** Aliquot and store at -20°C. Minimize freezing and thawing.

**Synonym / Alias Names** TULA|STS2 CBL-interacting protein 4|UBASH3A|ubiquitin associated and SH3 domain containing, A|T-cell ubiquitin ligand protein|Suppressor of T-cell receptor signaling 2|CLIP4

**Accession ID** NP\_061834.1; NP\_001001895.1

**Blocking Peptide** EBP07594

**Immunogen** Peptide with sequence QQCSTPDGKYRDP, from the internal region of the protein sequence according to NP\_061834.1; NP\_001001895.1.

**Product Comments** This antibody is expected to recognize both reported isoforms (NP\_061834.1 and NP\_001001895.1).

**Peptide Sequence** QQCSTPDGKYRDP

**Purification Method** Purified from goat serum by ammonium sulphate precipitation followed by antigen affinity chromatography using the immunizing peptide.

<b>Shipping Instructions</b>	Refrigerated
<b>Predicted Species</b>	Human, Dog
<b>Reactive Species</b>	Human
<b>Human Gene ID</b>	53347
<b>Product Grade</b>	<a href="https://prod-vector-labs-pimcore-assets.s3.us-east-1.amazonaws.com/assets/products/image/elite_medium.png">https://prod-vector-labs-pimcore-assets.s3.us-east-1.amazonaws.com/assets/products/image/elite_medium.png</a>
<b>IHC Results</b>	In paraffin embedded Human Spleen shows cytoplasm staining of T-cells eccentrically gathered around an artery. Recommended concentration: 2.5µg/ml.
<b>ELISA</b>	
<b>Detection Limit</b>	Antibody detection limit dilution 1:64000.
<b>Western Blot</b>	Preliminary experiments gave an approx 48kDa band in lysates of B-cell line Daudi after 0.1µg/ml antibody staining. Please note that currently we cannot find an explanation in the literature for the band we observe given the calculated size of 74.1kDa according to NP_061834.1 and 69.8kDa according to NP_001001895.1. The 48kDa band was successfully blocked by incubation with the immunizing peptide.
<b>Application Type</b>	Pep-ELISA, IHC

## DOCUMENTS

- [Data Sheet](#)

## GALLERY IMAGES

