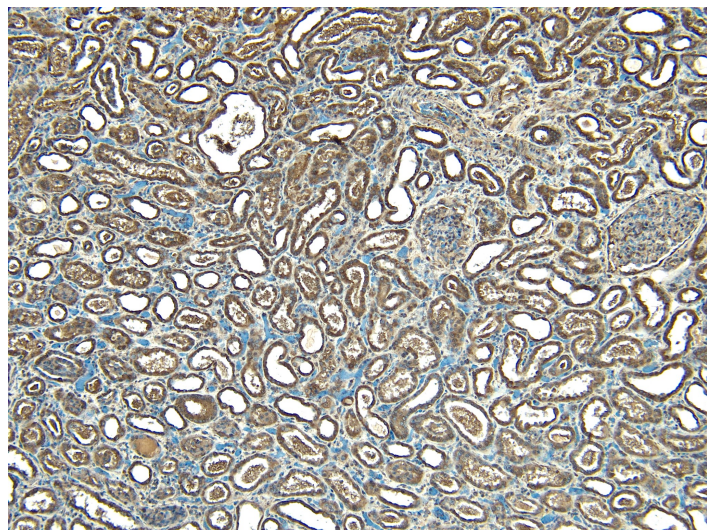


GOAT ANTI-STUB1 / CHIP ANTIBODY

SKU: EB05327



SPECIFICATIONS

Formulation Supplied at 0.5 mg/ml in Tris saline, 0.02% sodium azide, pH7.3 with 0.5% bovine serum albumin.

Unit Size 100 µg

Storage Instructions Aliquot and store at -20°C. Minimize freezing and thawing.

Synonym / Alias Names UBOX1|LA16c-313D11.6|heat shock protein A binding protein 2 (c-terminal)|carboxy terminus of Hsp70p-interacting protein|serologically defined colon cancer antigen 7|SDCCAG7|NY-CO-7|HSPABP2|STIP1 homology and U-Box containing protein 1|CHIP|STUB1

Accession ID NP_005852.2

Blocking Peptide EBP05327

Immunogen Peptide with sequence C-DAFISENGWVEDY, from the C Terminus of the protein sequence according to NP_005852.2.

Peptide Sequence C-DAFISENGWVEDY

Purification Method Purified from goat serum by ammonium sulphate precipitation followed by antigen affinity chromatography using the immunizing peptide.

Shipping Instructions Refrigerated

Predicted Species	Human, Mouse, Rat, Dog, Cow
Reactive Species	Human
Human Gene ID	10273
Product Grade	https://prod-vector-labs-pimcore-assets.s3.us-east-1.amazonaws.com/assets/products/image/elite_medium.png
IHC Results	Paraffin embedded Human Kidney. Recommended concentration: 5-6µg/ml.
ELISA	
Detection Limit	Antibody detection limit dilution 1:64000.
Western Blot	Approx 35kDa band observed in Human Muscle lysates (calculated MW of 34.9kDa according to NP_005852.2). Recommended concentration: 0.3-1µg/ml. Primary incubation was for 1 hour.
Application Type	Pep-ELISA, WB, IHC

DOCUMENTS

- [Data Sheet](#)

GALLERY IMAGES

