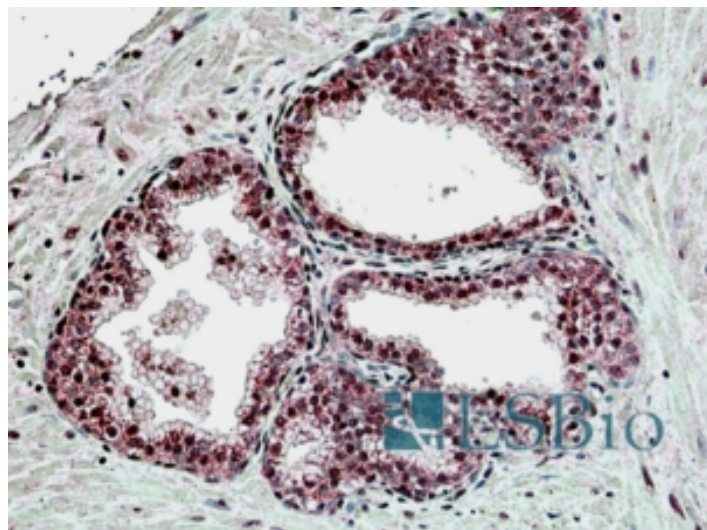


# GOAT ANTI-SUFU ANTIBODY

**SKU:** EB06309



## SPECIFICATIONS

**Formulation** Supplied at 0.5 mg/ml in Tris saline, 0.02% sodium azide, pH7.3 with 0.5% bovine serum albumin.

**Unit Size** 100 µg

**Storage Instructions** Aliquot and store at -20°C. Minimize freezing and thawing.

**Synonym /**

**Alias** suppressor of fused|suppressor of fused homolog (Drosophila)|SUFUXL|SUFUH|SUFU

**Names**

**Accession ID** NP\_057253.2; NP\_001171604.1

**Blocking Peptide** EBP06309

**Immunogen** Peptide with sequence AELRPSGAPGPT-C, from the N Terminus of the protein sequence according to NP\_057253.2; NP\_001171604.1.

**Product Comments** This antibody is expected to recognize both reported isoforms (NP\_057253.2; NP\_001171604.1)

**Peptide Sequence** AELRPSGAPGPT-C

**Purification Method** Purified from goat serum by ammonium sulphate precipitation followed by antigen affinity chromatography using the immunizing peptide.

<b>Shipping Instructions</b>	Refrigerated
<b>Predicted Species</b>	Human, Mouse, Rat, Dog, Pig, Cow
<b>Reactive Species</b>	Human
<b>Human Gene ID</b>	51684
<b>Mouse Gene ID</b>	24069
<b>Rat Gene ID</b>	361769
<b>Product Grade</b>	<a href="https://prod-vector-labs-pimcore-assets.s3.us-east-1.amazonaws.com/assets/products/image/elite_medium.png">https://prod-vector-labs-pimcore-assets.s3.us-east-1.amazonaws.com/assets/products/image/elite_medium.png</a>
<b>IHC Results</b>	In paraffin embedded Human Prostate shows preferential nuclear staining in secretory cells of the glands. Recommended concentration, 1-2µg/ml.
<b>ELISA</b>	
<b>Detection Limit</b>	Antibody detection limit dilution 1:32000.
<b>Application Type</b>	Pep-ELISA, IHC

## DOCUMENTS

- [Data Sheet](#)

## GALLERY IMAGES

