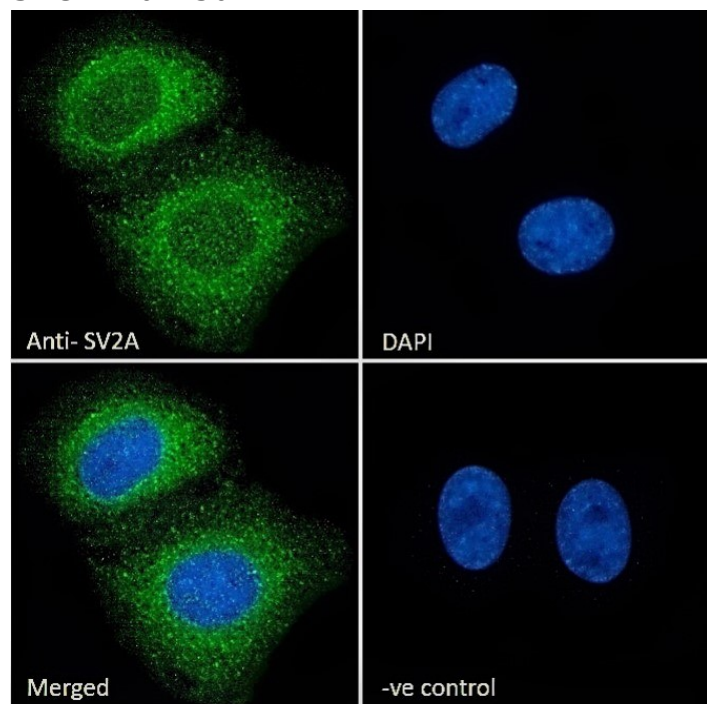


GOAT ANTI-SV2A ANTIBODY

SKU: EB07430



SPECIFICATIONS

Formulation Supplied at 0.5 mg/ml in Tris saline, 0.02% sodium azide, pH7.3 with 0.5% bovine serum albumin.

Unit Size 100 µg

Storage Instructions Aliquot and store at -20°C. Minimize freezing and thawing.

Synonym /

Alias Names synaptic vesicle glycoprotein 2|SV2|KIAA0736|synaptic vesicle glycoprotein 2A|SV2A

Usage Summary **Immunofluorescence:** Strong expression of the protein seen in the cytoplasm of U2OS and KNRK cells. Recommended concentration: 10µg/ml.

Accession ID NP_055664.3; NP_001265648.1

Blocking Peptide EBP07430

Immunogen Peptide with sequence C-TVELYPSDKRTTA, from the internal region of the protein sequence according to NP_055664.3; NP_001265648.1.

Peptide Sequence	C-TVELYPSDKRTTA
Purification Method	Purified from goat serum by ammonium sulphate precipitation followed by antigen affinity chromatography using the immunizing peptide.
Shipping Instructions	Refrigerated
Predicted Species	Human, Mouse, Rat, Dog, Pig, Cow
Reactive Species	Human, Rat
Human Gene ID	9900
Mouse Gene ID	64051
Rat Gene ID	117559
Product Grade	https://prod-vector-labs-pimcore-assets.s3.us-east-1.amazonaws.com/assets/products/image/elite_medium.png
ELISA Detection Limit	Antibody detection limit dilution 1:1000.
Western Blot	Preliminary testing showed a band at approx 80kDa in Mouse and Rat Brain lysate after 1.5µg/ml antibody staining (calculated MW of 82.6kDa according to Mouse NP_071313.1 and Rat NP_476558.2). Primary incubation 1 hour at room temperature.
Application Type	Pep-ELISA, IF

DOCUMENTS

- [Data Sheet](#)

GALLERY IMAGES

