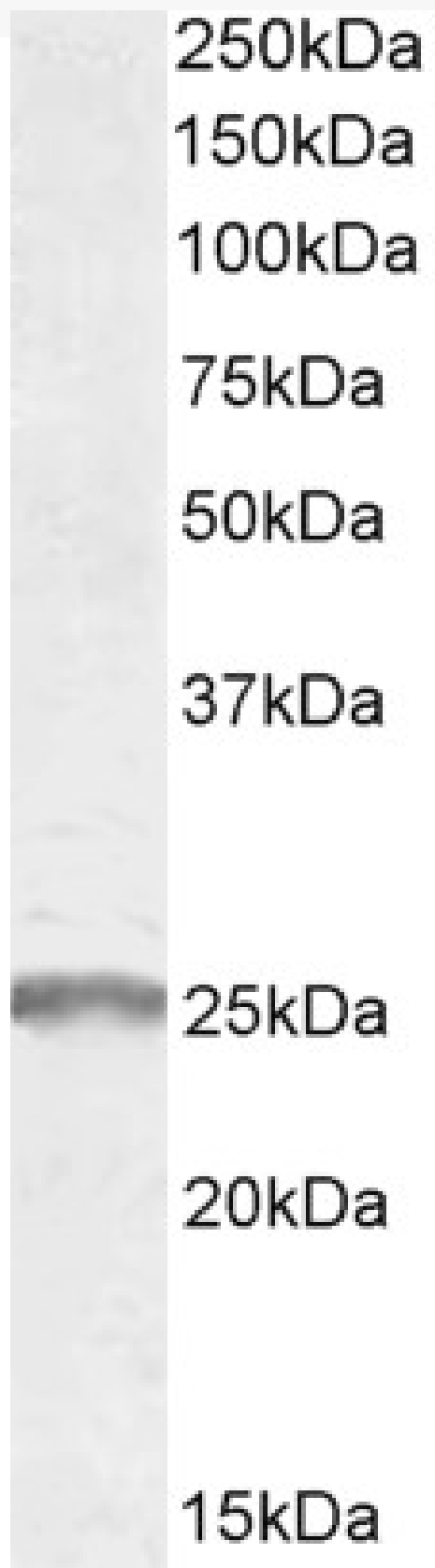


GOAT ANTI-SYNAPTOGYRIN 2 / CELLUGYRIN ANTIBODY

SKU: EB06584



SPECIFICATIONS

Formulation	Supplied at 0.5 mg/ml in Tris saline, 0.02% sodium azide, pH7.3 with 0.5% bovine serum albumin.
Unit Size	100 µg
Storage Instructions	Aliquot and store at -20°C. Minimize freezing and thawing.
Synonym / Alias Names	cellugyrin synaptogyrin 2 SYNGR2 MGC102914
Accession ID	NP_004701.1; NP_001307452.1
Blocking Peptide	EBP06584
Immunogen	Peptide with sequence CIYGEGYSNAHESKQ, from the internal region of the protein sequence according to NP_004701.1; NP_001307452.1.
Product Comments	This antibody is expected to recognize both reported antibodies (NP_004701.1; NP_001307452.1).
Peptide Sequence	CIYGEGYSNAHESKQ
Purification Method	Purified from goat serum by ammonium sulphate precipitation followed by antigen affinity chromatography using the immunizing peptide.
Shipping Instructions	Refrigerated
Predicted Species	Human, Mouse
Reactive Species	Human
Human Gene ID	9144
Product Grade	https://prod-vector-labs-pimcore-assets.s3.us-east-1.amazonaws.com/assets/products/image/elite_medium.png
ELISA Detection Limit	Antibody detection limit dilution 1:8000.
Western Blot	Approx 25-26kDa band observed in Human Muscle lysates (calculated MW of 24.8kDa according to NP_004701.1). Recommended concentration: 0.3-1µg/ml. Primary incubation was 1 hour.
Application Type	Pep-ELISA, WB

DOCUMENTS

- [Data Sheet](#)

GALLERY IMAGES

