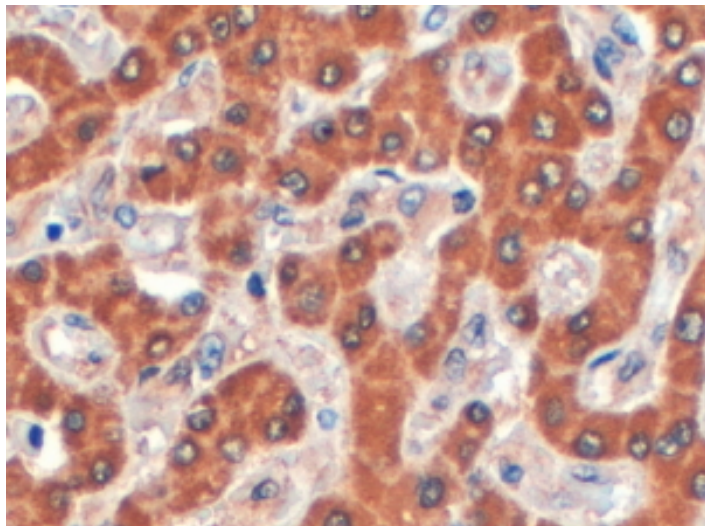


GOAT ANTI-SYNTENIN 2 ANTIBODY

SKU: EB06252



SPECIFICATIONS

Formulation Supplied at 0.5 mg/ml in Tris saline, 0.02% sodium azide, pH7.3 with 0.5% bovine serum albumin.

Unit Size 100 µg

Storage Instructions Aliquot and store at -20°C. Minimize freezing and thawing.

Synonym / Alias Names syndecan binding protein 2|OTTHUMP00000029964|OTTHUMP00000029961|FLJ12256|syntenin-2|syndecan binding protein (syntenin) 2|SITAC18|ST-2|SDCBP2

Accession ID NP_056500.3; NP_536737.3

Blocking Peptide EBP06252

Immunogen Peptide with sequence C-LLHHTMDHSIPDA, from the C Terminus of the protein sequence according to NP_056500.3; NP_536737.3.

Product Comments This antibody is expected to recognise both human isoforms (NP_056500; NP_536737).

Peptide Sequence C-LLHHTMDHSIPDA

Purification Method Purified from goat serum by ammonium sulphate precipitation followed by antigen affinity chromatography using the immunizing peptide.

Shipping Instructions	Refrigerated
Predicted Species	Human, Mouse, Rat
Reactive Species	Human
Human Gene ID	27111
Mouse Gene ID	228765
Product Grade	https://prod-vector-labs-pimcore-assets.s3.us-east-1.amazonaws.com/assets/products/image/elite_medium.png
IHC Results	In paraffin embedded Human Liver shows staining of cytoplasm in hepatocytes. Recommended concentration, 4-6µg/ml.
ELISA	
Detection Limit	Antibody detection limit dilution 1:16000.
Application Type	Pep-ELISA, IHC

DOCUMENTS

- [Data Sheet](#)

GALLERY IMAGES

