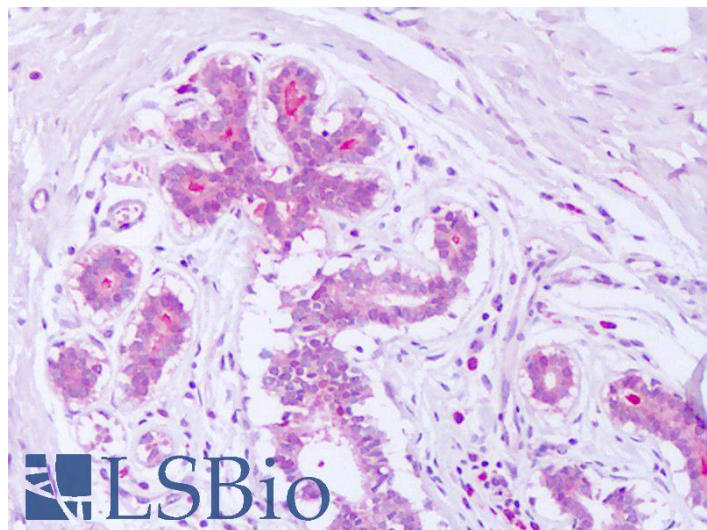


# GOAT ANTI-SYNTENIN / SDCBP ANTIBODY

**SKU:** EB07470



## SPECIFICATIONS

**Formulation** Supplied at 0.5 mg/ml in Tris saline, 0.02% sodium azide, pH7.3 with 0.5% bovine serum albumin.

**Unit Size** 100 µg

**Storage Instructions** Aliquot and store at -20°C. Minimize freezing and thawing.

**Synonym / Alias Names** scaffold protein Pbp1 syntenin|pro-TGF-alpha cytoplasmic domain-interacting protein 18|melanoma differentiation associated protein-9|TACIP18|SYCL|ST1|MDA-9|syndecan binding protein (syntenin)|Syntenin|SDCBP

**Accession ID** NP\_005616.2; NP\_001007068.1; NP\_001007069; NP\_001007070.1; NP\_001007071.1

**Blocking Peptide** EBP07470

**Immunogen** Peptide with sequence SLEDLKVDKVIQAQ-C, from the N Terminus of the protein sequence according to NP\_005616.2; NP\_001007068.1; NP\_001007069; NP\_001007070.1; NP\_001007071.1.

**Product Comments** This antibody is expected to recognise isoform 1 (NP\_005616.2 and NP\_001007068.1) and isoform 3 (NP\_001007070.1 and NP\_001007071.1) only.

**Peptide Sequence** SLEDLKVDKVIQAQ-C

**Purification Method** Purified from goat serum by ammonium sulphate precipitation followed by antigen affinity chromatography using the immunizing peptide.

<b>Shipping Instructions</b>	Refrigerated
<b>Predicted Species</b>	Human, Mouse, Rat, Dog
<b>Reactive Species</b>	Human
<b>Human Gene ID</b>	6386
<b>Mouse Gene ID</b>	53378
<b>Rat Gene ID</b>	83841
<b>Product Grade</b>	<a href="https://prod-vector-labs-pimcore-assets.s3.us-east-1.amazonaws.com/assets/products/image/elite_medium.png">https://prod-vector-labs-pimcore-assets.s3.us-east-1.amazonaws.com/assets/products/image/elite_medium.png</a>
<b>IHC Results</b>	Paraffin embedded Human Breast. Recommended concentration: 10µg/ml.
<b>ELISA</b>	
<b>Detection Limit</b>	Antibody detection limit dilution 1:128000.
<b>Western Blot</b>	Approx 28-30kDa band observed in lysates of cell lines HEK293 and A431 (calculated MW of 32.4kDa according to NP_005616.2 and NP_001007068.1 and of 32.3kDa according to NP_001007070.1 and NP_001007071.1). Recommended concentration: 0.01-0.03µg/ml. Primary incubation was 1 hour.
<b>Application Type</b>	Pep-ELISA, WB, IHC

## DOCUMENTS

- [Data Sheet](#)

## GALLERY IMAGES

