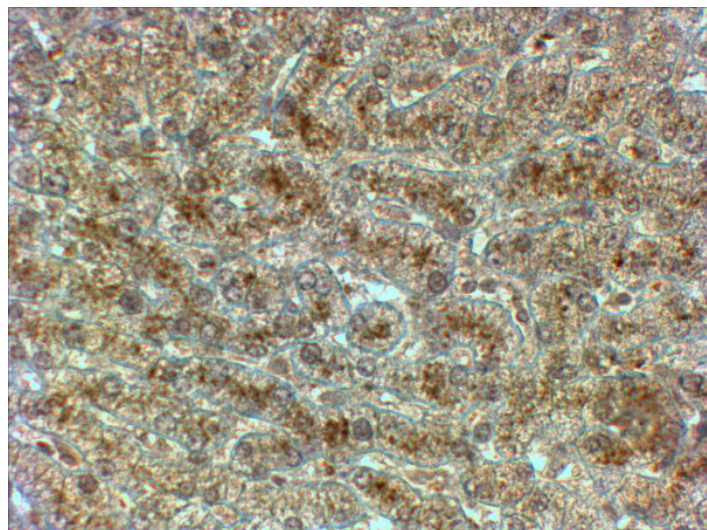


GOAT ANTI-SYVN1 ANTIBODY

SKU: EB09822



SPECIFICATIONS

Formulation Supplied at 0.5 mg/ml in Tris saline, 0.02% sodium azide, pH7.3 with 0.5% bovine serum albumin.

Unit Size 100 µg

Storage Instructions Aliquot and store at -20°C. Minimize freezing and thawing.

Synonym /

Alias SYVN1|synoviolin 1|synovial apoptosis inhibitor 1, synoviolin|MGC40372|KIAA1810|HRD1

Names

Accession ID NP_115807.1; NP_757385.1

Blocking Peptide EBP09822

Immunogen Peptide with sequence C-RALEGHERQHLE, from the internal region of the protein sequence according to NP_115807.1; NP_757385.1.

Product Comments This antibody is expected to recognize isoforms a and b (NP_115807.1; NP_757385.1).

Peptide Sequence C-RALEGHERQHLE

Purification Method Purified from goat serum by ammonium sulphate precipitation followed by antigen affinity chromatography using the immunizing peptide.

Shipping Instructions	Refrigerated
Predicted Species	Human, Rat
Reactive Species	Human
Human Gene ID	84447
Rat Gene ID	361712
Product Grade	https://prod-vector-labs-pimcore-assets.s3.us-east-1.amazonaws.com/assets/products/image/elite_medium.png
IHC Results	In paraffin embedded Human Liver shows textured cytoplasm staining in hepatocytes. Recommended concentration, 2-4µg/ml.
ELISA	
Detection Limit	Antibody detection limit dilution 1:32000.
Application Type	Pep-ELISA, IHC

DOCUMENTS

- [Data Sheet](#)

GALLERY IMAGES

