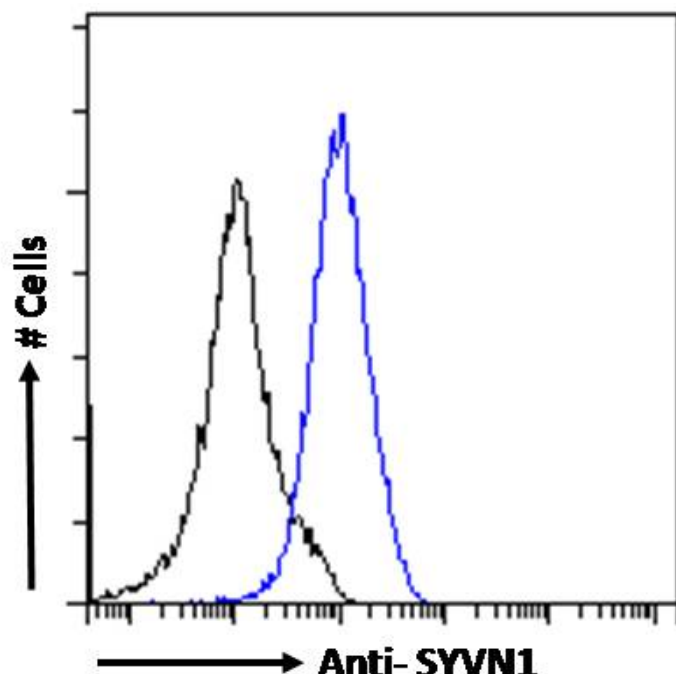


GOAT ANTI-SYVN1 ANTIBODY

SKU: EB09821



SPECIFICATIONS

Formulation Supplied at 0.5 mg/ml in Tris saline, 0.02% sodium azide, pH7.3 with 0.5% bovine serum albumin.

Unit Size 100 µg

Storage Instructions Aliquot and store at -20°C. Minimize freezing and thawing.

Synonym /

Alias Names SYVN1|synoviolin 1|synovial apoptosis inhibitor 1, synoviolin|MGC40372|KIAA1810|HRD1

Usage Summary **Immunofluorescence:** Strong expression of the protein seen in the nuclei and endoplasmic reticulum of A431 cells. Recommended concentration: 10µg/ml. **Flow Cytometry:** Flow cytometric analysis of A431 cells. Recommended concentration: 10ug/ml.

Accession ID NP_115807.1; NP_757385.1

Blocking Peptide EBP09821

Immunogen Peptide with sequence C-HERQHLEARLQS, from the internal region of the protein sequence according to NP_115807.1; NP_757385.1.

Product Comments	This antibody is expected to recognize isoforms a and b (NP_115807.1; NP_757385.1).
Peptide Sequence	C-HERQHLEARLQS
Purification Method	Purified from goat serum by ammonium sulphate precipitation followed by antigen affinity chromatography using the immunizing peptide.
Shipping Instructions	Refrigerated
Predicted Species	Human, Mouse, Rat, Dog
Reactive Species	Human, Rat
Human Gene ID	84447
Rat Gene ID	361712
Product Grade	https://prod-vector-labs-pimcore-assets.s3.us-east-1.amazonaws.com/assets/products/image/elite_plus_medium.png
ELISA Detection Limit	Antibody detection limit dilution 1:32000.
Western Blot	Approx 70kDa band observed in Human Cerebellum and Rat Lung lysates (calculated MW of 67.6kDa according to Human NP_115807.1 and 66.9kDa according to Rat NP_001094209.1). Recommended concentration: 1-3µg/ml. Primary incubation 1 hour at room temperature
Application Type	Pep-ELISA, WB, IF, FC

DOCUMENTS

- [Data Sheet](#)

GALLERY IMAGES

