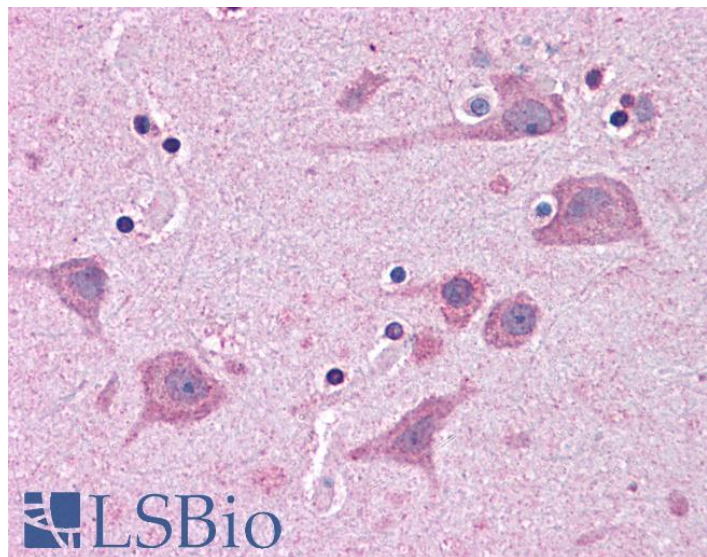


# GOAT ANTI-TAB182 ANTIBODY

**SKU:** EB05699



## SPECIFICATIONS

**Formulation** Supplied at 0.5 mg/ml in Tris saline, 0.02% sodium azide, pH7.3 with 0.5% bovine serum albumin.

**Unit Size** 100 µg

**Storage Instructions** Aliquot and store at -20°C. Minimize freezing and thawing.

**Synonym / Alias Names** TNKS1BP1|tankyrase 1 binding protein 1, 182kDa|TAB182|KIAA1741|tankyrase 1-binding protein of 182 kDa|FLJ45975|tankyrase 1-binding protein 1

**Accession ID** NP\_203754.2

**Blocking Peptide** EBP05699

**Immunogen** Peptide with sequence KVSTLRESSAMAS-C, from the N Terminus of the protein sequence according to NP\_203754.2.

**Peptide Sequence** KVSTLRESSAMAS-C

**Purification Method** Purified from goat serum by ammonium sulphate precipitation followed by antigen affinity chromatography using the immunizing peptide.

**Shipping Instructions** Refrigerated

<b>Predicted Species</b>	Human
<b>Reactive Species</b>	Human
<b>Human Gene ID</b>	85456
<b>Product Grade</b>	<a href="https://prod-vector-labs-pimcore-assets.s3.us-east-1.amazonaws.com/assets/products/image/elite_medium.png">https://prod-vector-labs-pimcore-assets.s3.us-east-1.amazonaws.com/assets/products/image/elite_medium.png</a>
<b>IHC Results</b>	Paraffin embedded Human Brain (Cortex). Recommended concentration: 5µg/ml.
<b>ELISA</b>	
<b>Detection Limit</b>	Antibody detection limit dilution 1:64000.
<b>Western Blot</b>	Preliminary experiments in Human Ovary and Lung lysates gave no specific signal but low background (at antibody concentration up to 1µg/ml).
<b>Application Type</b>	Pep-ELISA, IHC

## DOCUMENTS

- [Data Sheet](#)

## GALLERY IMAGES

