

# GOAT ANTI-TAF8 / TAFII43 ANTIBODY

**SKU:** EB09721

250kDa

150kDa

100kDa

75kDa

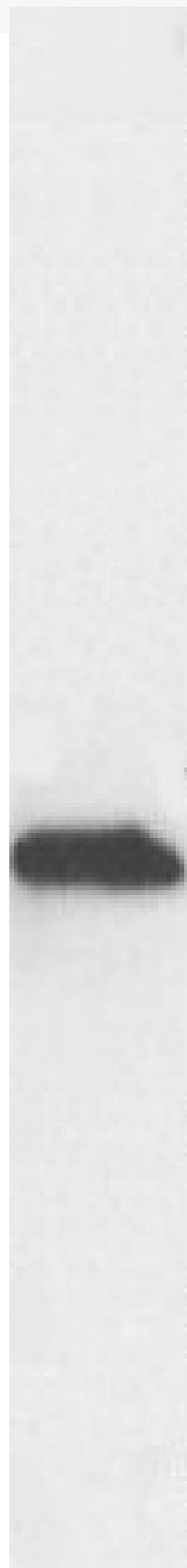
50kDa

37kDa

25kDa

20kDa

15kDa



## SPECIFICATIONS

<b>Formulation</b>	Supplied at 0.5 mg/ml in Tris saline, 0.02% sodium azide, pH7.3 with 0.5% bovine serum albumin.
<b>Unit Size</b>	100 µg
<b>Storage Instructions</b>	Aliquot and store at -20°C. Minimize freezing and thawing.
<b>Synonym / Alias Names</b>	taube nuss homolog TBP-associated factor, RNA polymerase II, 43 kD TBP-associated factor TAFII43 TBP-associated factor 8 TATA box binding protein (TBP)-associated factor, RNA polymerase II, A, 45/50kDa TAF8 RNA polymerase II, TATA box binding protein (TBP)-associated factor, 50 kD TAF(II)43 OTTHUMP00000016392 TBN TAFII43 TAF III FLJ32821 43 TAF8 RNA polymerase II, TATA box binding protein (TBP)-associated factor, 43kDa TAF8
<b>Usage Summary</b>	<strong>Flow Cytometry:</strong> Flow cytometric analysis of NIH3T3 cells. Recommended concentration: 10ug/ml.
<b>Accession ID</b>	NP_612639.2
<b>Blocking Peptide</b>	EBP09721
<b>Immunogen</b>	Peptide with sequence KSYCEHTARTQPT, from the internal region of the protein sequence according to NP_612639.2.
<b>Peptide Sequence</b>	KSYCEHTARTQPT
<b>Purification Method</b>	Purified from goat serum by ammonium sulphate precipitation followed by antigen affinity chromatography using the immunizing peptide.
<b>Shipping Instructions</b>	Refrigerated
<b>Predicted Species</b>	Human, Mouse, Rat, Dog, Cow
<b>Reactive Species</b>	Human, Mouse, Rat
<b>Human Gene ID</b>	129685
<b>Mouse Gene ID</b>	63856
<b>Rat Gene ID</b>	316216
<b>Product Grade</b>	<a href="https://prod-vector-labs-pimcore-assets.s3.us-east-1.amazonaws.com/assets/products/image/elite_medium.png">https://prod-vector-labs-pimcore-assets.s3.us-east-1.amazonaws.com/assets/products/image/elite_medium.png</a>
<b>ELISA Detection Limit</b>	Antibody detection limit dilution 1:16000.
<b>Western Blot</b>	Approx. 37kDa band observed in Human Hippocampus lysates, approx. 38kDa in Mouse and Rat Brain lysates and approx. 35kDa in lysates of cell line NIH3T3 (calculated MW of 34.3kDa according to Human NP_612639.2, 34.0kDa according to Mouse NP_071298.1 and 34.1kDa according to Rat NP_001101667.1). Recommended concentration: 0.5-µg/ml. Primary incubation 1 hour at room temperature.

**Application**  
**Type**      Pep-ELISA, WB, FC

## DOCUMENTS

- [Data Sheet](#)

## GALLERY IMAGES

