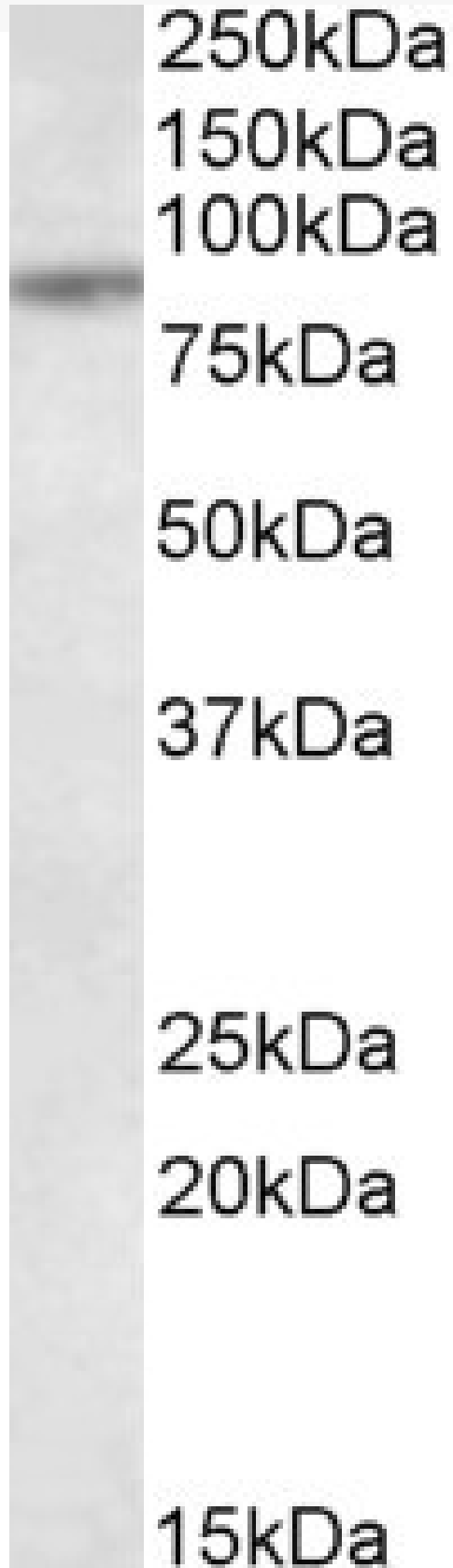


GOAT ANTI-TAP1 ANTIBODY

SKU: EB08872



SPECIFICATIONS

Formulation	Supplied at 0.5 mg/ml in Tris saline, 0.02% sodium azide, pH7.3 with 0.5% bovine serum albumin.
Unit Size	100 µg
Storage Instructions	Aliquot and store at -20°C. Minimize freezing and thawing.
Synonym / Alias Names	TAP1 transporter 1, ATP-binding cassette, sub-family B (MDR/TAP) ABC17 ABCB2 APT1 D6S114E FLJ26666 FLJ41500 PSF1 RING4 TAP1*0102N TAP1N ABC transporter, MHC 1 ATP-binding cassette transporter ATP-binding cassette, sub-family B (MDR/TAP), member 2 ATP-binding cassette, sub-family B, member 2 antigen peptide transporter 1 peptide supply factor 1 transporter 1, ATP-binding cassette, sub-family B transporter associated with antigen processing transporter, ATP-binding cassette, major histocompatibility complex, 1
Accession ID	NP_000584.2
Blocking Peptide	EBP08872
Immunogen	Peptide with sequence C-QKFREKLQEIKT, from the internal region of the protein sequence according to NP_000584.2.
Peptide Sequence	C-QKFREKLQEIKT
Purification Method	Purified from goat serum by ammonium sulphate precipitation followed by antigen affinity chromatography using the immunizing peptide.
Shipping Instructions	Refrigerated
Predicted Species	Human
Reactive Species	Human
Human Gene ID	6890
Product Grade	https://prod-vector-labs-pimcore-assets.s3.us-east-1.amazonaws.com/assets/products/image/elite_medium.png
ELISA Detection Limit	Antibody detection limit dilution 1:32000.
Western Blot	Approx 85kDa band observed in lysates of cell line MCF7 (calculated MW of 87.2kDa according to NP_000584.2). Recommended concentration: 1-3µg/ml.
Application Type	Pep-ELISA, WB

DOCUMENTS

- [Data Sheet](#)

GALLERY IMAGES

