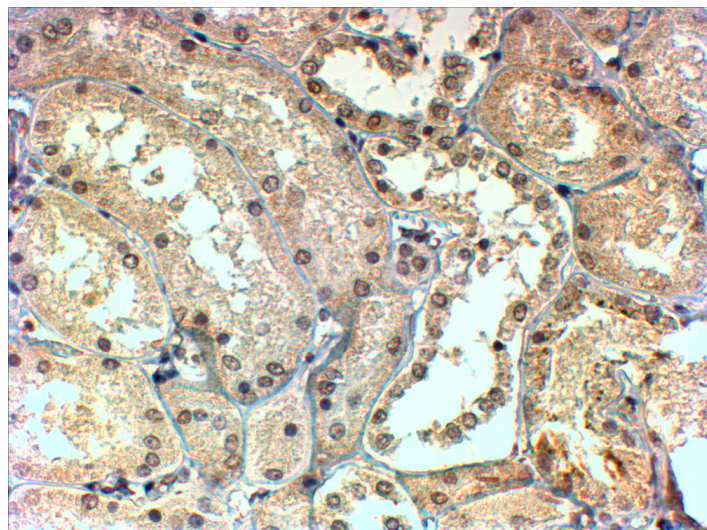


GOAT ANTI-TBL1X / TBL1XR1 ANTIBODY

SKU: EB05313



SPECIFICATIONS

Formulation Supplied at 0.5 mg/ml in Tris saline, 0.02% sodium azide, pH7.3 with 0.5% bovine serum albumin.

Unit Size 100 µg

Storage Instructions Aliquot and store at -20°C. Minimize freezing and thawing.

Synonym / Alias Names transducin beta-like 1X|OTTHUMP00000022879|F-box-like/WD repeat-containing protein TBL1X|SMAP55|nuclear receptor co-repressor/HDAC3 complex subunit|TBL1-related protein 1|C21, DC42, FLJ12894, IRA1, TBLR1|transducin (beta)-like 1X-linked receptor 1|transducin (beta)-like 1 X-linked|transducin (beta)-like 1|transducin (beta)-like 1X-linked|TBL1|EBI|TBL1XR1|TBL1X

Accession ID NP_005638.1; NP_001132938.1; NP_001132939.1; NP_001132940.1; NP_078941.2

Blocking Peptide EBP05313

Immunogen Peptide with sequence SASDGSVCVLDLRK, from the C Terminus of the protein sequence according to NP_005638.1; NP_001132938.1; NP_001132939.1; NP_001132940.1; NP_078941.2.

Product Comments This antibody is also expected to recognise the human protein TBLR1 (NP_078941), which is very similar. Variants (NP_005638.1; NP_001132938.1) encode isoform a (TBL1X) and variants (NP_001132939.1; NP_001132940.1) encode isoform b (TBLX1).

Peptide Sequence SASDGSVCVLDLRK

Purification Method	Purified from goat serum by ammonium sulphate precipitation followed by antigen affinity chromatography using the immunizing peptide.
Shipping Instructions	Refrigerated
Predicted Species	Human, Mouse, Rat, Dog, Cow
Reactive Species	Human
Human Gene ID	6907, 79718
Product Grade	https://prod-vector-labs-pimcore-assets.s3.us-east-1.amazonaws.com/assets/products/image/elite_medium.png
IHC Results	In paraffin embedded Human Kidney shows preferential nuclear staining in the DCT. Recommended concentration, 4-6µg/ml.
ELISA Detection Limit	Antibody detection limit dilution 1:4000.
Application Type	Pep-ELISA, IHC

DOCUMENTS

- [Data Sheet](#)

GALLERY IMAGES

