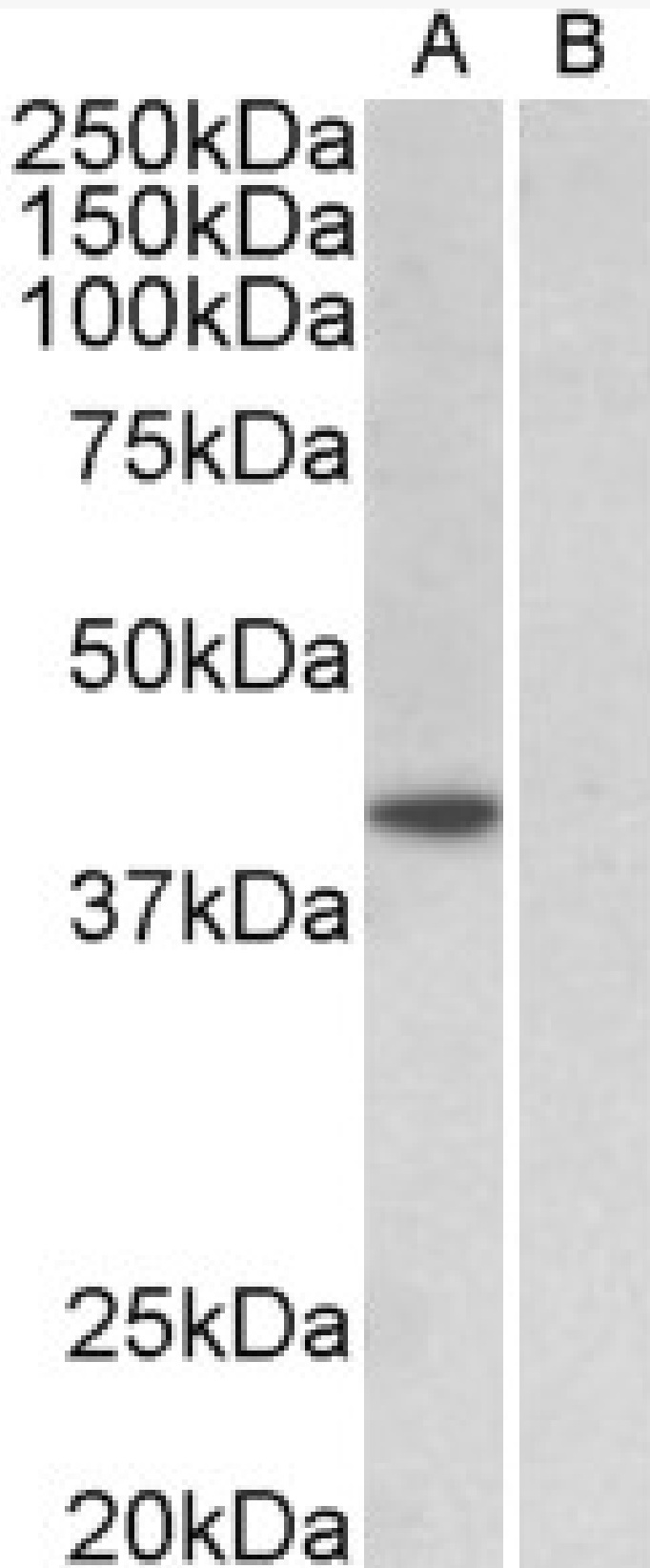


# GOAT ANTI-TBP /TRANSCRIPTION FACTOR IID (AA39-50) ANTIBODY

**SKU:** EB11402



## SPECIFICATIONS

**Formulation** Supplied at 0.5 mg/ml in Tris saline, 0.02% sodium azide, pH7.3 with 0.5% bovine serum albumin.

**Unit Size** 100 µg

**Storage Instructions** Aliquot and store at -20°C. Minimize freezing and thawing.

**Synonym / Alias Names** TBP| transcription initiation factor TFIID TBP subunit| TFIID| TATA-box-binding protein| TATA-box factor| TATA-box binding protein N-terminal domain| TATA sequence-binding protein| TATA box binding protein| SCA17| MGC126055| MGC126054| MGC117320| HDL4| GTF2D1| GTF2D

**Accession ID** NP\_003185.1; NP\_001165556.1

**Blocking Peptide** EBP11402

**Immunogen** Peptide with sequence C-TPQPIQNTNSLS, from the internal region of the protein sequence according to NP\_003185.1; NP\_001165556.1.

**Product Comments** This antibody is expected to recognize both reported isoforms (NP\_003185.1; NP\_001165556.1).

**Peptide Sequence** C-TPQPIQNTNSLS

**Purification Method** Purified from goat serum by ammonium sulphate precipitation followed by antigen affinity chromatography using the immunizing peptide.

**Shipping Instructions** Refrigerated

**Predicted Species** Human, Mouse, Rat, Dog, Pig, Cow

**Reactive Species** Human, Mouse, Rat

**Human Gene ID** 6908

**Mouse Gene ID** 21374

**Rat Gene ID** 117526

**Product Grade** [https://prod-vector-labs-pimcore-assets.s3.us-east-1.amazonaws.com/assets/products/image/elite\\_medium.png](https://prod-vector-labs-pimcore-assets.s3.us-east-1.amazonaws.com/assets/products/image/elite_medium.png)

**ELISA Detection Limit** Antibody detection limit dilution 1:8000.

**Western Blot** Approx 40kDa band observed in nuclear, but not in cytosolic lysates of cell line HeLa (calculated MW of 37.7kDa according to NP\_003185.1) and 37kDa observed in lysates of NIH3T3 and of Mouse and Rat Testis lysates (calculated MW of 34.7kDa according to Mouse NP\_038712.3 and of 35.0kDa according to Rat NP\_001004198.1). Recommended concentration: 1-3µg/ml.

**Application Type** Pep-ELISA, WB

## DOCUMENTS

- [Data Sheet](#)

## GALLERY IMAGES

