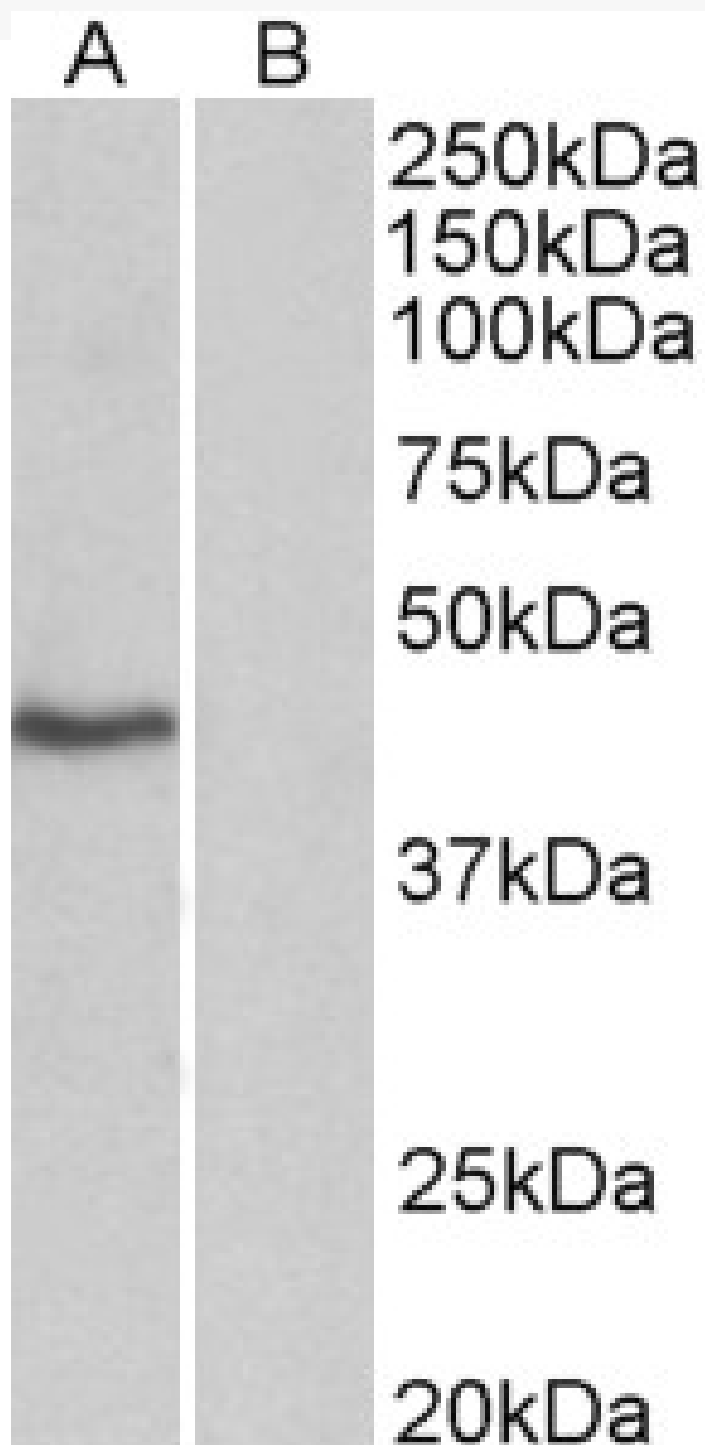


GOAT ANTI-TBP /TRANSCRIPTION FACTOR IID (ISOFORM1) ANTIBODY

SKU: EB11401



SPECIFICATIONS

| | |
|------------------------------|---|
| Formulation | Supplied at 0.5 mg/ml in Tris saline, 0.02% sodium azide, pH7.3 with 0.5% bovine serum albumin. |
| Unit Size | 100 µg |
| Storage Instructions | Aliquot and store at -20°C. Minimize freezing and thawing. |
| Synonym / Alias | TBP transcription initiation factor TFIID TBP subunit TFIID TATA-box-binding protein TATA-box factor TATA-box binding protein N-terminal domain TATA sequence-binding protein TATA box binding protein SCA17 |
| Names | MGC126055 MGC126054 MGC117320 HDL4 GTF2D1 GTF2D |
| Accession ID | NP_003185.1 |
| Blocking Peptide | EBP11401 |
| Immunogen | Peptide with sequence DQNNSLPPYAQ-C, from the N Terminus of the protein sequence according to NP_003185.1. |
| Product Comments | This antibody is expected to recognize reported isoform 1(NP_003185.1) only. |
| Peptide Sequence | DQNNSLPPYAQ-C |
| Purification Method | Purified from goat serum by ammonium sulphate precipitation followed by antigen affinity chromatography using the immunizing peptide. |
| Shipping Instructions | Refrigerated |
| Predicted Species | Human, Mouse, Rat, Dog, Pig, Cow |
| Reactive Species | Human |
| Human Gene ID | 6908 |
| Mouse Gene ID | 21374 |
| Rat Gene ID | 117526 |
| Product Grade | https://prod-vector-labs-pimcore-assets.s3.us-east-1.amazonaws.com/assets/products/image/elite_medium.png |
| ELISA Detection Limit | Antibody detection limit dilution 1:64000. |
| Western Blot | Approx 40kDa band observed in nuclear, but not in cytosolic lysates of cell line HeLa (calculated MW of 37.7kDa according to NP_003185.1). Recommended concentration: 0.3-1µg/ml. |
| Application Type | Pep-ELISA, WB |

DOCUMENTS

- [Data Sheet](#)

GALLERY IMAGES

