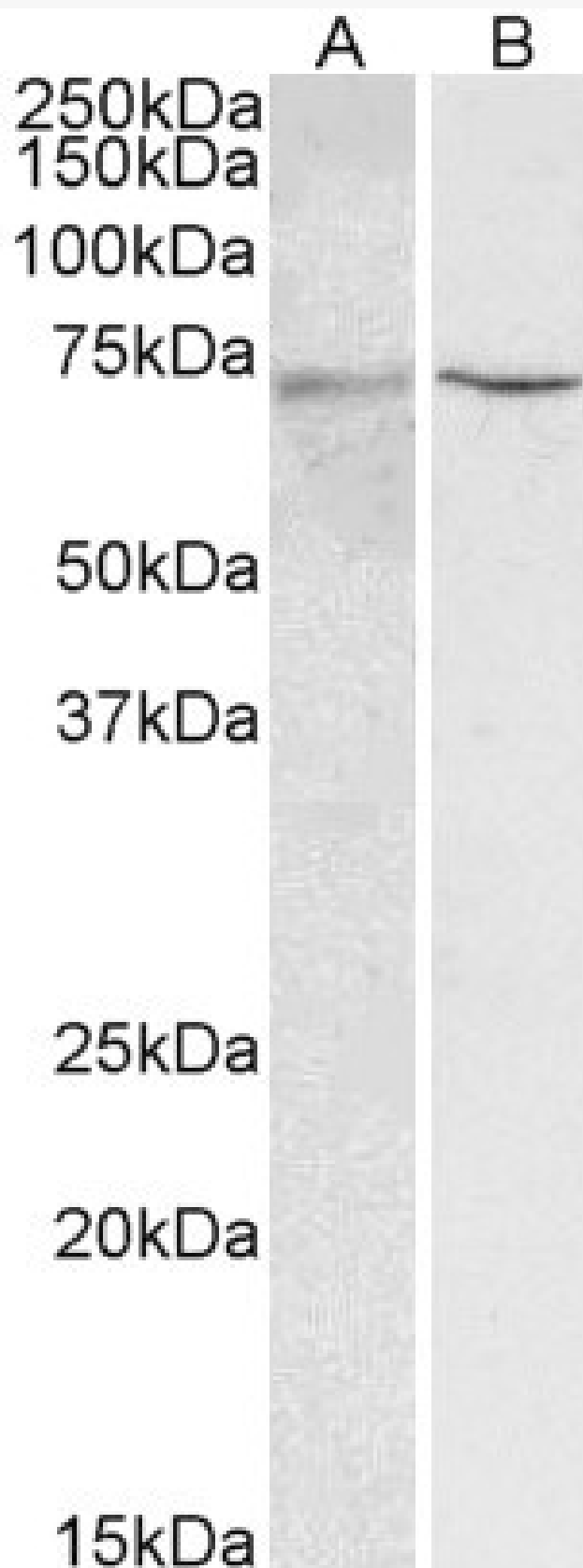


# GOAT ANTI-HNF1A ANTIBODY

**SKU:** EB06701



## SPECIFICATIONS

<b>Formulation</b>	Supplied at 0.5 mg/ml in Tris saline, 0.02% sodium azide, pH7.3 with 0.5% bovine serum albumin.
<b>Unit Size</b>	100 µg
<b>Storage</b>	
<b>Instructions</b>	Aliquot and store at -20°C. Minimize freezing and thawing.
<b>Synonym / Alias Names</b>	transcription factor 1, hepatic  liver-specific transcription factor LF-B1  interferon production regulator factor  hepatocyte nuclear factor 1-alpha  hepatic nuclear factor 1  albumin proximal factor  OTTHUMP00000240206  OTTHUMP00000240204  OTTHUMP00000240200  OTTHUMP00000198944  HNF-1-alpha  MODY3  LFB1  IDDM20  TCF-1  TCF1  HNF1  HNF-1A  HNF1 homeobox A HNF1A
<b>Usage</b>	<strong>Immunofluorescence:</strong> Strong expression of the protein seen in the Nucleus of NIH3T3 cells.
<b>Summary</b>	Recommended concentration: 10µg/ml.
<b>Accession ID</b>	NP_000536.5
<b>Blocking Peptide</b>	EBP06701
<b>Immunogen</b>	Peptide with sequence C-VIETFISTQMASSSQ, from the C Terminus of the protein sequence according to NP_000536.5.
<b>Peptide Sequence</b>	C-VIETFISTQMASSSQ
<b>Purification Method</b>	Purified from goat serum by ammonium sulphate precipitation followed by antigen affinity chromatography using the immunizing peptide.
<b>Shipping Instructions</b>	Refrigerated
<b>Predicted Species</b>	Human, Mouse, Rat, Dog, Pig, Cow
<b>Reactive Species</b>	Human, Mouse, Rat
<b>Human Gene ID</b>	6927
<b>Mouse Gene ID</b>	21405
<b>Rat Gene ID</b>	24817
<b>Product Grade</b>	<a href="https://prod-vector-labs-pimcore-assets.s3.us-east-1.amazonaws.com/assets/products/image/elite_plus_medium.png">https://prod-vector-labs-pimcore-assets.s3.us-east-1.amazonaws.com/assets/products/image/elite_plus_medium.png</a>
<b>IHC Results</b>	In paraffin embedded Human Liver shows nuclear staining in hepatocytes. Recommended concentration, 2-4µg/ml.
<b>ELISA</b>	
<b>Detection Limit</b>	Antibody detection limit dilution 1:128000.
<b>Western Blot</b>	Approx 70kDa band observed in Rat Liver and Mouse Liver lysates (calculated MW of 67.4kDa according to NP_000536.5). Recommended concentration: 2-6µg/ml. Primary incubation 1 hour at room temperature.
<b>Application Type</b>	Pep-ELISA, WB, IF, IHC

## DOCUMENTS

- [Data Sheet](#)

## GALLERY IMAGES

