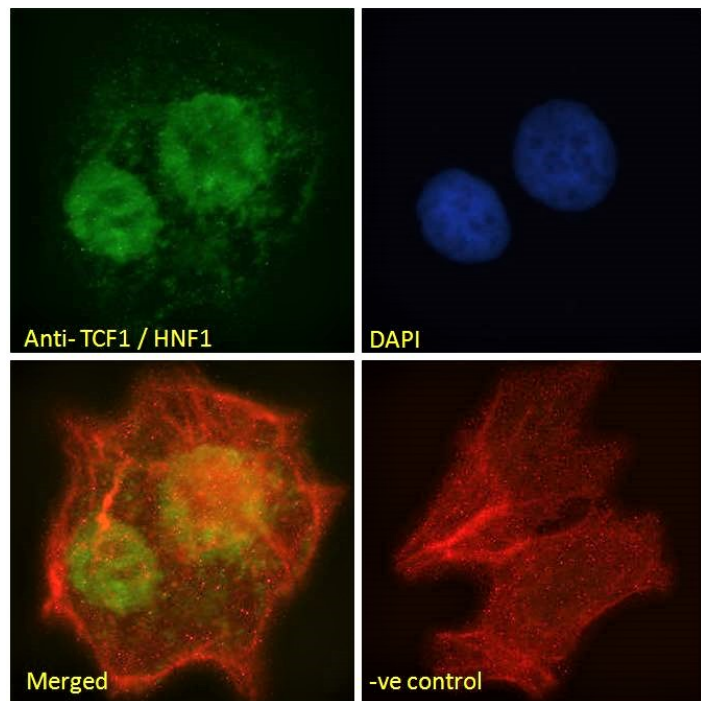


## GOAT ANTI-TCF1 / HNF1 ANTIBODY

SKU: EB07589



## SPECIFICATIONS

**Formulation** Supplied at 0.5 mg/ml in Tris saline, 0.02% sodium azide, pH7.3 with 0.5% bovine serum albumin.

**Unit Size** 100 µg

**Storage Instructions** Aliquot and store at -20°C. Minimize freezing and thawing.

**Synonym / Alias Names** transcription factor 1, hepatic maturity onset diabetes of the young 3, hepatic nuclear factor 1, albumin proximal factor, Interferon production regulator factor (HNF1), MODY3, LFB1, HNF1A, HNF1, transcription factor 1, hepatic LF-B1, hepatic nuclear factor (HNF1), albumin proximal factor, TCF1

**Usage Summary** **Immunofluorescence:** Strong expression of the protein seen in the nuclei of HepG2 and U2OS cells. Recommended concentration: 10 µg/ml. **Flow Cytometry:** Flow cytometric analysis of HepG2 cells. Recommended concentration: 10 µg/ml.

**Accession ID** NP\_000536.3

**Blocking Peptide** EBP07589

<b>Immunogen</b>	Peptide with sequence C-DELPTKKGRRNRFK, from the internal region of the protein sequence according to NP_000536.3.
<b>Peptide Sequence</b>	C-DELPTKKGRRNRFK
<b>Purification Method</b>	Purified from goat serum by ammonium sulphate precipitation followed by antigen affinity chromatography using the immunizing peptide.
<b>Shipping Instructions</b>	Refrigerated
<b>Predicted Species</b>	Human, Mouse, Rat, Dog
<b>Reactive Species</b>	Human
<b>Human Gene ID</b>	6927
<b>Mouse Gene ID</b>	21405
<b>Rat Gene ID</b>	24817
<b>Product Grade</b>	<a href="https://prod-vector-labs-pimcore-assets.s3.us-east-1.amazonaws.com/assets/products/image/elite_medium.png">https://prod-vector-labs-pimcore-assets.s3.us-east-1.amazonaws.com/assets/products/image/elite_medium.png</a>
<b>ELISA Detection Limit</b>	Antibody detection limit dilution 1:4000.
<b>Western Blot</b>	A customer reported a weak band at approx. 75kDa on lysate of cell line Caco-2, at a concentration of 3ug/ml. Primary incubation 1 hour at room temperature.
<b>Application Type</b>	Pep-ELISA, IF, FC

## DOCUMENTS

- [Data Sheet](#)

## GALLERY IMAGES

