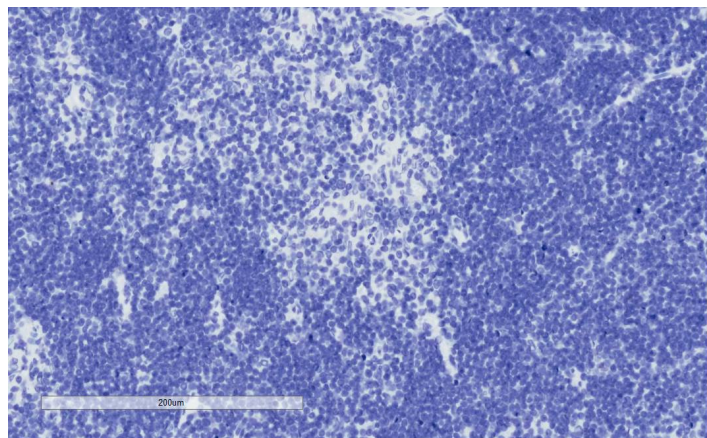


GOAT ANTI-TCFEC (MOUSE) ANTIBODY

SKU: EB07934



SPECIFICATIONS

Formulation Supplied at 0.5 mg/ml in Tris saline, 0.02% sodium azide, pH7.3 with 0.5% bovine serum albumin.

Unit Size 100 µg

Storage Instructions Aliquot and store at -20°C. Minimize freezing and thawing.

Synonym /

Alias TFEC|MGC107474|BB107417|transcription factor EC|Tcfec

Names

Accession ID NP_112475.1

Blocking Peptide EBP07934

Immunogen Peptide with sequence C-HITKQQTHPERN, from the internal region of the protein sequence according to NP_112475.1.

Peptide Sequence C-HITKQQTHPERN

Purification Method Purified from goat serum by ammonium sulphate precipitation followed by antigen affinity chromatography using the immunizing peptide.

Shipping Instructions Refrigerated

Predicted Species Mouse, Rat

Reactive Species Mouse, Human

Mouse Gene ID	21426
Rat Gene ID	26296
Product Grade	https://prod-vector-labs-pimcore-assets.s3.us-east-1.amazonaws.com/assets/products/image/elite_medium.png
IHC Results	In paraffin embedded Mouse Thymus shows nuclear staining in sporadic cells of the medula. Recommended concentration: 4-6µg/ml. Paraffin embedded Human Kidney and Spleen. Recommended concentration: 5µg/ml.
ELISA Detection Limit	Antibody detection limit dilution 1:32000.
Western Blot	Preliminary experiments gave one band at approx 37kDa and much stronger bands at approx 70+28kDa in Mouse Testis lysates after 0.5 µg/ml antibody staining. Please note that currently we cannot find an explanation in the literature for the stonger bands we observe given the calculated size of 35.1kDa according to Mouse NP_112475.1. All detected bands were successfully blocked by incubation with the immunizing peptide (and BLAST results with the immunizing peptide sequence did not identify any other proteins to explain the additional bands).
Application Type	Pep-ELISA, IHC

DOCUMENTS

- [Data Sheet](#)

GALLERY IMAGES

