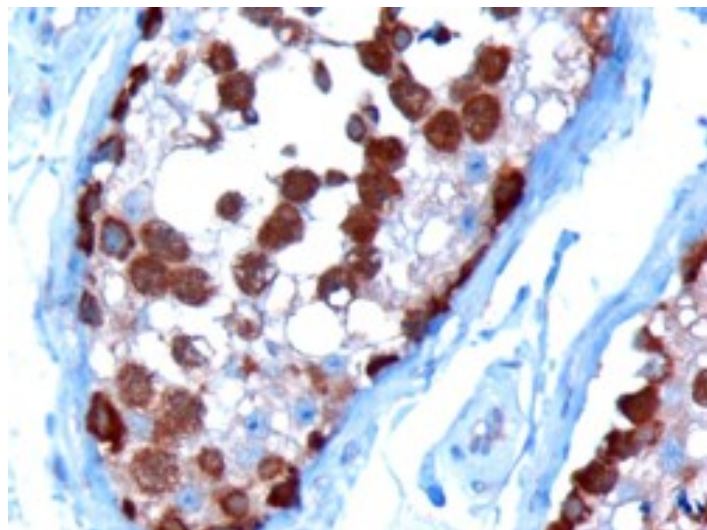


GOAT ANTI-TCP1 ANTIBODY

SKU: EB06277



SPECIFICATIONS

Formulation	Supplied at 0.5 mg/ml in Tris saline, 0.02% sodium azide, pH7.3 with 0.5% bovine serum albumin.
Unit Size	100 µg
Storage Instructions	Aliquot and store at -20°C. Minimize freezing and thawing.
Synonym / Alias Names	tailless complex polypeptide 1 T-complex protein 1, alpha subunit T-complex protein 1 TCP-1-alpha D6S230E CCTa CCT1 CCT-alpha t-complex 1 TCP1
Usage Summary	Immunofluorescence: Strong expression of the protein seen in the cytoplasm and nuclei of HeLa cells. Recommended concentration: 10µg/ml. Flow Cytometry: Flow cytometric analysis of HeLa cells. Recommended concentration: 10ug/ml.
Accession ID	NP_110379.2; NP_001008897.1
Blocking Peptide	EBP06277
Immunogen	Peptide with sequence C-SYEDAVHSGALND, from the C Terminus of the protein sequence according to NP_110379.2; NP_001008897.1.
Product Comments	This antibody is expected to recognise both reported isoforms.
Peptide Sequence	C-SYEDAVHSGALND

Purification Method	Purified from goat serum by ammonium sulphate precipitation followed by antigen affinity chromatography using the immunizing peptide.
Shipping Instructions	Refrigerated
Predicted Species	Human
Reactive Species	Human
Human Gene ID	6950
Product Grade	https://prod-vector-labs-pimcore-assets.s3.us-east-1.amazonaws.com/assets/products/image/elite_plus_medium.png
IHC Results	In paraffin embedded Human Testis shows only cytoplasmic staining in some germ cells, and both cytoplasmic and nuclear staining in other germ cells with unstained nucleoli. Recommended concentration: 1-2µg/ml.
ELISA Detection Limit	Antibody detection limit dilution 1:32000.
Western Blot	Approx 60kDa band observed in lysates of cell line HEK293 and in Human Ovary lysates (calculated MW of 60.3kDa according to NP_110379.2). Recommended concentration: 0.3-1µg/ml. Primary incubation 1 hour at room temperature.
Application Type	Pep-ELISA, WB, IHC, IF, FC

DOCUMENTS

- [Data Sheet](#)

GALLERY IMAGES

