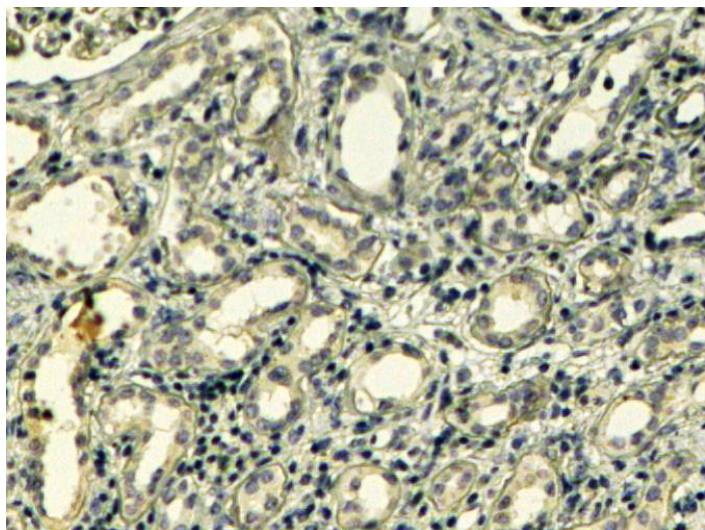


GOAT ANTI-TENSIN 1 / TNS1 ANTIBODY

SKU: EB05119



SPECIFICATIONS

Formulation	Supplied at 0.5 mg/ml in Tris saline, 0.02% sodium azide, pH7.3 with 0.5% bovine serum albumin.
Unit Size	100 µg
Storage Instructions	Aliquot and store at -20°C. Minimize freezing and thawing.
Synonym / Alias Names	tensin matrix-remodelling associated 6 Matrix-remodelling-associated protein 6 MXRA6 MSTP127 MSTP122 MST127 MST122 MST091 DKFZp586K0617 MSTP091 DKFZP434G162 FLJ10923 PRO0929 MGC88584 tensin TNS tensin 1 TNS1
Accession ID	NP_072174.3
Blocking Peptide	EBP05119
Immunogen	Peptide with sequence C-VSKVMLNAGQKR, from the C Terminus of the protein sequence according to NP_072174.3.
Peptide Sequence	C-VSKVMLNAGQKR
Purification Method	Purified from goat serum by ammonium sulphate precipitation followed by antigen affinity chromatography using the immunizing peptide.
Shipping Instructions	Refrigerated
Predicted Species	Human, Mouse, Rat, Dog, Cow
Reactive Species	Human
Human Gene ID	7145
Mouse Gene ID	21961

Rat Gene ID 301509

Product Grade https://prod-vector-labs-pimcore-assets.s3.us-east-1.amazonaws.com/assets/products/image/elite_medium.png

IHC Results In paraffin embedded Human Kidney shows weak staining of the basement membranes of convoluted tubules. Recommended concentration, 4-6µg/ml.

ELISA

Detection Limit Antibody detection limit dilution 1:2000.

Western

Blot Preliminary experiments in Human Heart, Kidney and Skeletal Muscle lysates gave no specific signal but low background (at antibody concentration up to 1µg/ml). We would appreciate any feedback from people in the field - have any results been reported with other antibodies/lysates?

Application Type Pep-ELISA, IHC

DOCUMENTS

- [Data Sheet](#)

GALLERY IMAGES

