



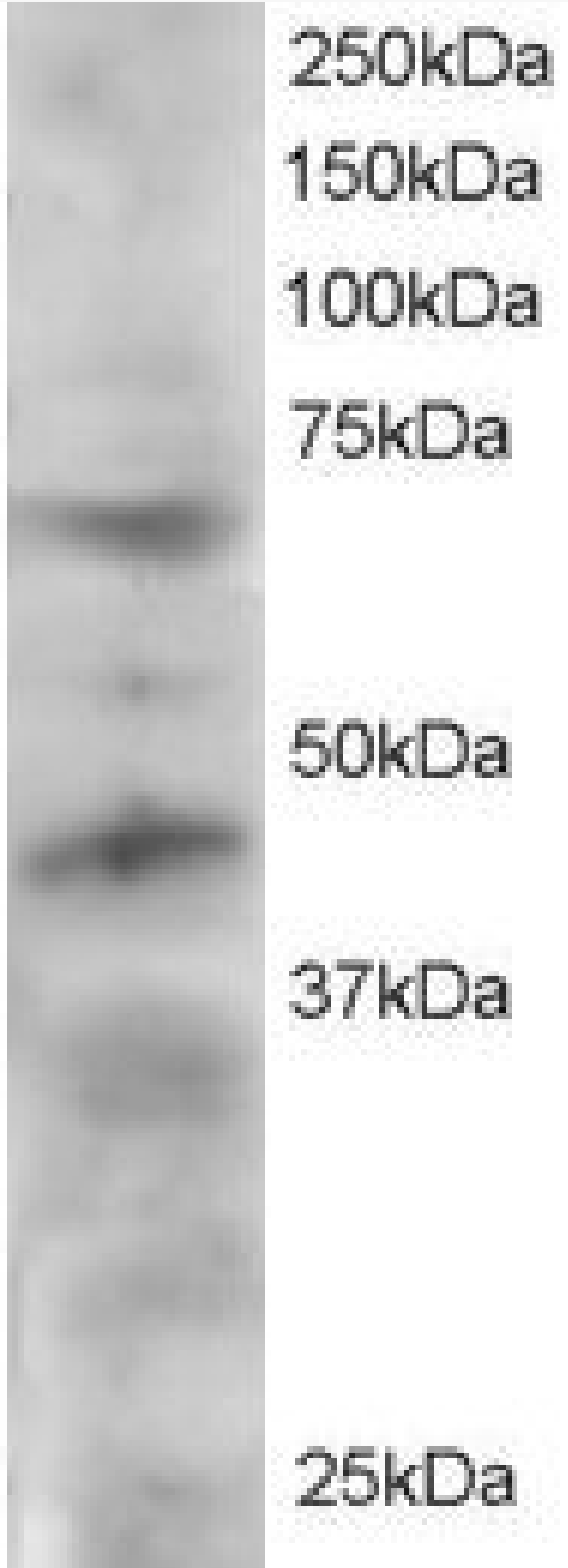
[www.everestbiotech.com](http://www.everestbiotech.com)

Email: [customerservice@vectorlabs.com](mailto:customerservice@vectorlabs.com)

Telephone: [\(650\) 697-3600](tel:(650)697-3600)

# GOAT ANTI-TERF1 / PIN2 ANTIBODY

**SKU:** EB05325





---

## SPECIFICATIONS

<b>Formulation</b>	Supplied at 0.5 mg/ml in Tris saline, 0.02% sodium azide, pH7.3 with 0.5% bovine serum albumin.
<b>Unit Size</b>	100 µg
<b>Storage Instructions</b>	Aliquot and store at -20°C. Minimize freezing and thawing.
<b>Synonym / Alias Names</b>	t-TRF1 FLJ41416 telomeric repeat binding protein 1 Telomeric repeat binding factor 1 telomeric repeat binding factor (NIMA-interacting) 1 hTRF1-AS TRBF1 TRF1 TRF PIN2 TERF1
<b>Accession ID</b>	NP_003209.2; NP_059523.2
<b>Blocking Peptide</b>	EBP05325
<b>Immunogen</b>	Peptide with sequence C-TMKKLLISSDSED, from the C Terminus of the protein sequence according to NP_003209.2; NP_059523.2.
<b>Product Comments</b>	This antibody is expected to recognise isoform 1 (NP_059523.2) and isoform 2 (NP_003209.2).
<b>Peptide Sequence</b>	C-TMKKLLISSDSED
<b>Purification Method</b>	Purified from goat serum by ammonium sulphate precipitation followed by antigen affinity chromatography using the immunizing peptide.
<b>Shipping Instructions</b>	Refrigerated
<b>Predicted Species</b>	Human, Pig, Cow
<b>Reactive Species</b>	Human
<b>Human Gene ID</b>	7013
<b>Product Grade</b>	<a href="https://prod-vector-labs-pimcore-assets.s3.us-east-1.amazonaws.com/assets/products/image/elite_medium.png">https://prod-vector-labs-pimcore-assets.s3.us-east-1.amazonaws.com/assets/products/image/elite_medium.png</a>
<b>ELISA Detection Limit</b>	Antibody detection limit dilution 1:8000.
<b>Western Blot</b>	Approx 60-65kDa and 45kDa bands seen in HeLa lysate. Recommended for use at 1-3µg/ml.
<b>Application Type</b>	Pep-ELISA, WB

## DOCUMENTS

- [Data Sheet](#)



## GALLERY IMAGES

