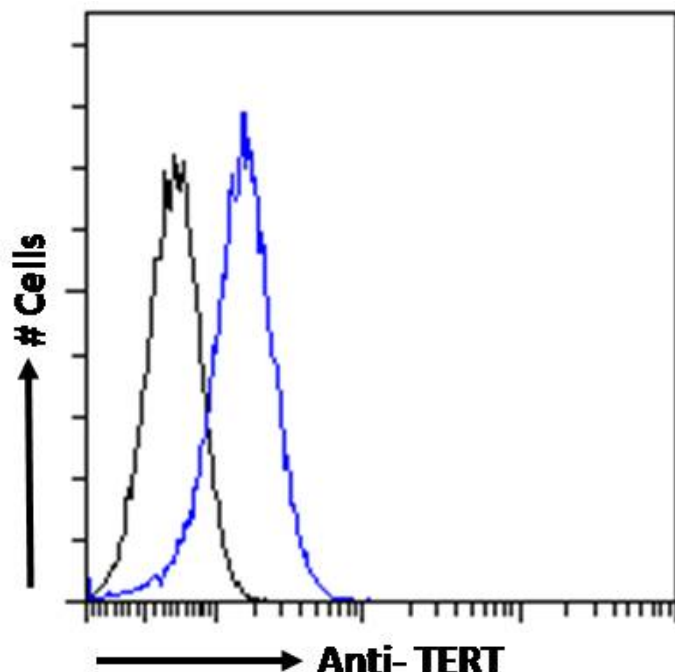


# GOAT ANTI-TERT (AA597-611) ANTIBODY

SKU: EB11292



## SPECIFICATIONS

**Formulation** Supplied at 0.5 mg/ml in Tris saline, 0.02% sodium azide, pH7.3 with 0.5% bovine serum albumin.

**Unit Size** 100 µg

**Storage Instructions** Aliquot and store at -20°C. Minimize freezing and thawing.

**Synonym / Alias Names** TERT| TRT| TP2| telomerase-associated protein 2| telomerase reverse transcriptase| telomerase catalytic subunit| TCS1| hEST2| EST2

**Usage Summary** **Immunofluorescence:** Strong expression of the protein seen in the nuclei and cytoplasm of HeLa cells. Recommended concentration: 10µg/ml. **Flow Cytometry:** Flow cytometric analysis of HeLa cells. Recommended concentration: 10ug/ml.

**Accession ID** NP\_937983.2; NP\_001180305.1

**Blocking Peptide** EBP11292

<b>Immunogen</b>	Peptide with sequence C-QLRELSEAEVRQHRE, from the internal region of the protein sequence according to NP_937983.2; NP_001180305.1.
<b>Product Comments</b>	This antibody is expected to recognize both reported isoforms (NP_937983.2; (NP_001180305.1).
<b>Peptide Sequence</b>	C-QLRELSEAEVRQHRE
<b>Purification Method</b>	Purified from goat serum by ammonium sulphate precipitation followed by antigen affinity chromatography using the immunizing peptide.
<b>Shipping Instructions</b>	Refrigerated
<b>Predicted Species</b>	Human
<b>Reactive Species</b>	Human
<b>Human Gene ID</b>	7015
<b>Product Grade</b>	<a href="https://prod-vector-labs-pimcore-assets.s3.us-east-1.amazonaws.com/assets/products/image/elite_medium.png">https://prod-vector-labs-pimcore-assets.s3.us-east-1.amazonaws.com/assets/products/image/elite_medium.png</a>
<b>ELISA Detection Limit</b>	Antibody detection limit dilution 1:32000.
<b>Western Blot</b>	Preliminary testing showed a band at approx 125kDa in lysates of cell lines A549 and CaCo-2 after 1µg/ml antibody staining (calculated MW of 127kDa according to NP_937983.2). Primary incubation 1 hour at room temperature.
<b>Application Type</b>	Pep-ELISA, IF, FC

## DOCUMENTS

- [Data Sheet](#)

## GALLERY IMAGES

