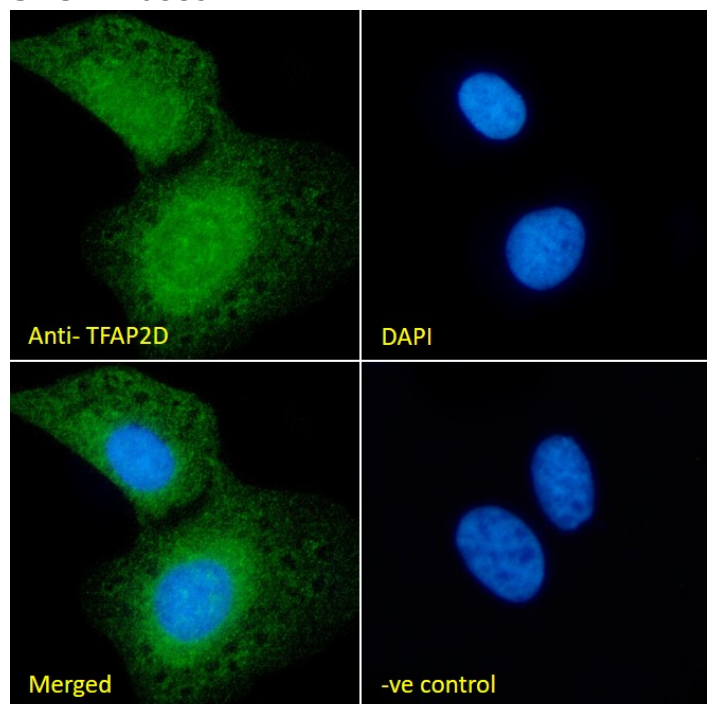


GOAT ANTI-TFAP2D ANTIBODY

SKU: EB08892



SPECIFICATIONS

Formulation	Supplied at 0.5 mg/ml in Tris saline, 0.02% sodium azide, pH7.3 with 0.5% bovine serum albumin.
Unit Size	100 µg
Storage	
Instructions	Aliquot and store at -20°C. Minimize freezing and thawing.
Synonym / Alias Names	transcription factor AP-2 beta-like 1 transcription factor AP-2 beta (activating enhancer-binding protein 2 beta)-like 1 transcription factor AP-2 beta (activating enhancer binding protein 2 beta)-like 1 activating enhancer binding protein 2 beta-like 1 OTTHUMP00000016593 AP-2 like TFAP2BL1 transcription factor AP-2 delta (activating enhancer binding protein 2 delta) TFAP2D
Usage Summary	<p>Immunofluorescence: Strong expression of the protein seen in A549 and U2OS cells.</p> <p>Flow Cytometry: Flow cytometric analysis of A549 cells. Recommended concentration: 10ug/ml.</p>
Accession ID	NP_758438.2
Blocking Peptide	EBP08892

Immunogen	Peptide with sequence C-HHQSFHYYEFQHSHP, from the internal region of the protein sequence according to NP_758438.2.
Peptide Sequence	C-HHQSFHYYEFQHSHP
Purification Method	Purified from goat serum by ammonium sulphate precipitation followed by antigen affinity chromatography using the immunizing peptide.
Shipping Instructions	Refrigerated
Predicted Species	Human, Mouse, Cow
Reactive Species	Human, Mouse
Human Gene ID	83741
Mouse Gene ID	226896
Rat Gene ID	301284
Product Grade	https://prod-vector-labs-pimcore-assets.s3.us-east-1.amazonaws.com/assets/products/image/elite_plus_medium.png
ELISA Detection Limit	Antibody detection limit dilution 1:64000.
Western Blot	Approx. 48kDa band observed in nuclear lysates of cell line NIH3T3 and approx. 50kDa in Human Ovary lysates, and in preliminary testing of Human Placenta lysate (calculated MW of 49.5kDa according to Human NP_758438.2 and Mouse NP_694794.1). Recommended concentration: 1-3µg/ml. Primary incubation 1 hour at room temperature.
Application Type	Pep-ELISA, WB, IF, FC

DOCUMENTS

- [Data Sheet](#)

GALLERY IMAGES

