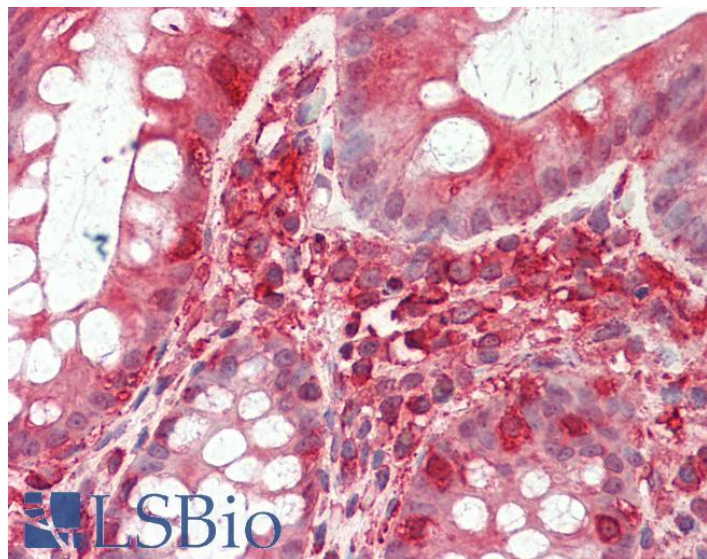


# GOAT ANTI-TFB2M ANTIBODY

**SKU:** EB10931



## SPECIFICATIONS

**Formulation** Supplied at 0.5 mg/ml in Tris saline, 0.02% sodium azide, pH7.3 with 0.5% bovine serum albumin.

**Unit Size** 100 µg

**Storage Instructions** Aliquot and store at -20°C. Minimize freezing and thawing.

**Synonym / Alias Names** hTFB| h-mtTFB2| dimethyladenosine transferase 2, mitochondrial| S-adenosylmethionine-6-N', N'-adenosyl(rRNA) dimethyltransferase 2| HCV NS5A-transactivated protein 5| mtTFB2| Hkp1| FLJ23182| FLJ22661| transcription factor B2, mitochondrial|TFB2M

**Accession ID** NP\_071761.1

**Blocking Peptide** EBP10931

**Immunogen** Peptide with sequence KHCFGRRSATVIDH, from the internal region of the protein sequence according to NP\_071761.1.

**Peptide Sequence** KHCFGRRSATVIDH

**Purification Method** Purified from goat serum by ammonium sulphate precipitation followed by antigen affinity chromatography using the immunizing peptide.

**Shipping Instructions** Refrigerated

<b>Predicted Species</b>	Human
<b>Reactive Species</b>	Human
<b>Human Gene ID</b>	64216
<b>Product Grade</b>	<a href="https://prod-vector-labs-pimcore-assets.s3.us-east-1.amazonaws.com/assets/products/image/elite_medium.png">https://prod-vector-labs-pimcore-assets.s3.us-east-1.amazonaws.com/assets/products/image/elite_medium.png</a>
<b>IHC Results</b>	Paraffin embedded Human Colon. Recommended concentration: 5µg/ml.
<b>ELISA</b>	
<b>Detection Limit</b>	Antibody detection limit dilution 1:64000.
<b>Western Blot</b>	Approx 45kDa band observed in Human Lung lysates (calculated MW of 45.3kDa according to NP_071761.1). Recommended concentration: 0.1-0.3µg/ml. Primary incubation was 1 hour.
<b>Application Type</b>	Pep-ELISA, WB, IHC

## DOCUMENTS

- [Data Sheet](#)

## GALLERY IMAGES

