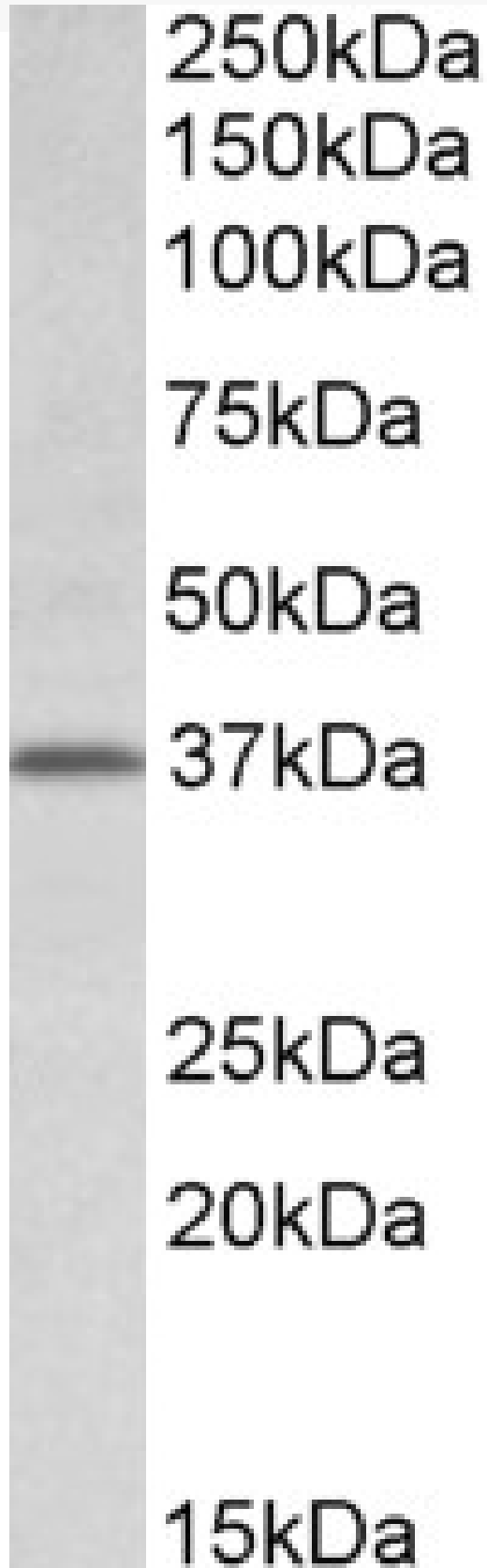


GOAT ANTI-TFB2M (MOUSE) ANTIBODY

SKU: EB10932



SPECIFICATIONS

Formulation Supplied at 0.5 mg/ml in Tris saline, 0.02% sodium azide, pH7.3 with 0.5% bovine serum albumin.

Unit Size 100 µg

Storage Instructions Aliquot and store at -20°C. Minimize freezing and thawing.

Synonym / Alias Names mtTFB2| mitochondrial transcription factor B2| mitochondrial 12S rRNA dimethylase 2| mTFB2M| house-keeping protein 1| dimethyladenosine transferase 2, mitochondrial| S-adenosylmethionine-6-N', N'-adenosyl(rRNA) dimethyltransferase 2| OTTMUSP00000025719| Hkp1| transcription factor B2, mitochondrial|Tfb2m

Accession ID NP_032275.2

Blocking Peptide EBP10932

Immunogen Peptide with sequence C-RNLVRDLLEHQNPS, from the internal region of the protein sequence according to NP_032275.2.

Peptide Sequence C-RNLVRDLLEHQNPS

Purification Method Purified from goat serum by ammonium sulphate precipitation followed by antigen affinity chromatography using the immunizing peptide.

Shipping Instructions Refrigerated

Predicted Species Mouse, Rat

Reactive Species Mouse, Rat

Mouse Gene ID 15278

Rat Gene ID 289307

Product Grade https://prod-vector-labs-pimcore-assets.s3.us-east-1.amazonaws.com/assets/products/image/elite_medium.png

ELISA Detection Limit Antibody detection limit dilution 1:4000.

Western Blot Approx 37kDa band observed in Mouse and Rat Lung lysates (calculated MW of 45.9kDa according to NP_032275.2). This molecular weight is routinely observed by other sources. Recommended concentration: 0.5-2µg/ml.

Application Type Pep-ELISA, WB

DOCUMENTS

- [Data Sheet](#)

GALLERY IMAGES

