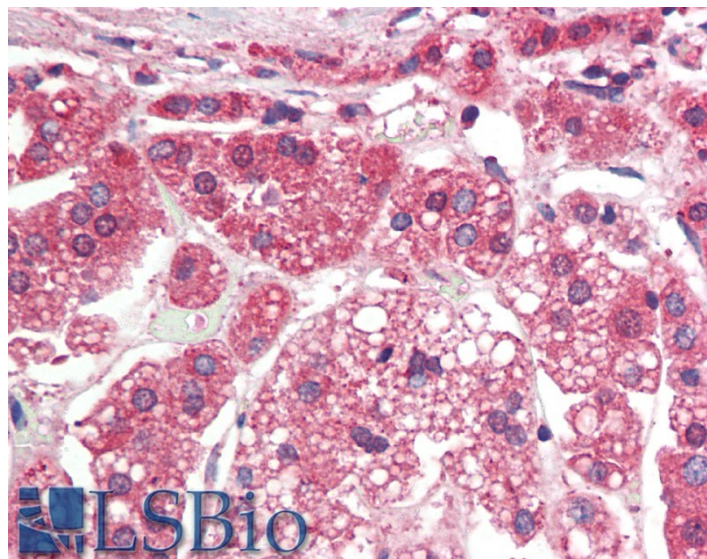


GOAT ANTI-TGFBR1 (AA50-63) ANTIBODY

SKU: EB11053



SPECIFICATIONS

Formulation Supplied at 0.5 mg/ml in Tris saline, 0.02% sodium azide, pH7.3 with 0.5% bovine serum albumin.

Unit Size 100 µg

Storage Instructions Aliquot and store at -20°C. Minimize freezing and thawing.

Synonym / Alias Names TGFBR1| transforming growth factor-beta receptor type II| transforming growth factor, beta receptor I (activin A receptor type II-like kinase, 53kD)| transforming growth factor, beta receptor 1| transforming growth factor beta receptor II| TGFR-1| TGF-beta type I receptor| TGF-beta receptor type-1| TGF-beta receptor type II| tbetaR-II| SKR4| serine/threonine-protein kinase receptor R4| LDS2A| LDS1A| ALK-5| ALK5| ACVRLK4| activin receptor-like kinase 5| activin A receptor type II-like kinase, 53kDa| activin A receptor type II-like kinase, 53kD| AAT5| transforming growth factor-beta receptor type II| transforming growth factor, beta receptor I (activin A receptor type II-like kinase, 53kD)| transforming growth factor beta receptor II| tbetaR-II| serine/threonine-protein kinase receptor R4| activin receptor-like kinase 5| activin A receptor type II-like kinase, 53kDa| activin A receptor type II-like kinase, 53kD| TGF-beta type I receptor| TGF-beta receptor type-1| TGF-beta receptor type II| TGFR-1| SKR4| LDS2A| LDS1A| ALK5| ALK-5| ACVRLK4| AAT5| transforming growth factor, beta receptor 1|TGFBR1

Usage Summary Flow Cytometry: Flow cytometric analysis of HeLa cells. Recommended concentration: 10ug/ml. <p>Immunofluorescence: This antibody is not recommended for IF testing.</p>

Accession ID NP_004603.1; NP_001124388.1

Blocking Peptide EBP11053

Immunogen	Peptide with sequence TDGLCFVSVTETTD, from the internal region of the protein sequence according to NP_004603.1; NP_001124388.1.
Product Comments	This antibody is expected to recognize both reported isoforms (NP_004603.1; NP_001124388.1). The immunizing peptide represents part of a potential extracellular domain.
Peptide Sequence	TDGLCFVSVTETTD
Purification Method	Purified from goat serum by ammonium sulphate precipitation followed by antigen affinity chromatography using the immunizing peptide.
Shipping Instructions	Refrigerated
Predicted Species	Human, Mouse, Rat, Dog, Pig, Cow
Reactive Species	Human, Rat
Human Gene ID	7046
Mouse Gene ID	21812
Rat Gene ID	29591
Product Grade	https://prod-vector-labs-pimcore-assets.s3.us-east-1.amazonaws.com/assets/products/image/elite_plus_medium.png
IHC Results	Paraffin embedded Human Adrenal Gland and Small Intestine. Recommended concentration: 5µg/ml.
ELISA	
Detection Limit	Antibody detection limit dilution 1:64000.
Western Blot	Approx 55kDa band observed in Rat Liver and Rat Lung lysates (calculated MW of 55.6kDa according to Rat NP_036907.2). Recommended concentration: 0.03-0.1µg/ml. Primary incubation 1 hour at room temperature.
Application Type	Pep-ELISA, WB, IHC, FC

DOCUMENTS

- [Data Sheet](#)

GALLERY IMAGES

