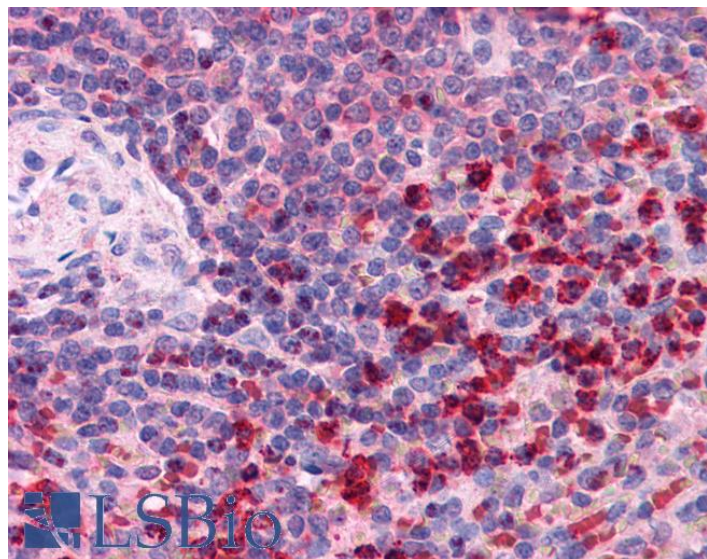


GOAT ANTI-THIOREDOXIN REDUCTASE 1 ANTIBODY

SKU: EB05510



SPECIFICATIONS

Formulation Supplied at 0.5 mg/ml in Tris saline, 0.02% sodium azide, pH7.3 with 0.5% bovine serum albumin.

Unit Size 100 µg

Storage Instructions Aliquot and store at -20°C. Minimize freezing and thawing.

Synonym / Alias Names thioredoxin reductase GRIM-12|oxidoreductase|KM-102-derived reductase-like factor|TRXR1|TR|GMC9145|GRIM-12|TXNR|TR1|thioredoxin reductase 1|TXNRD1

Accession ID NP_003321.2; NP_877393.1; NP_877419.1; NP_877420.1; NP_001087240.1

Blocking Peptide EBP05510

Immunogen Peptide with sequence TKRSGASILQAGC, from the C Terminus of the protein sequence according to NP_003321.2; NP_877393.1; NP_877419.1; NP_877420.1; NP_001087240.1.

Product Comments This antibody is expected to recognise reported isoform 1 (NP_003321.2), isoform 2 (NP_877393.1; NP_877419.1; NP_877420.1) and isoform 3 (NP_001087240.1)

Peptide Sequence TKRSGASILQAGC

Purification Method Purified from goat serum by ammonium sulphate precipitation followed by antigen affinity chromatography using the immunizing peptide.

Shipping Instructions	Refrigerated
Predicted Species	Human
Reactive Species	Human
Human Gene ID	7296
Product Grade	https://prod-vector-labs-pimcore-assets.s3.us-east-1.amazonaws.com/assets/products/image/elite_medium.png
IHC Results	Paraffin embedded Human Testis and Spleen. Recommended concentration: 2.5µg/ml.
ELISA	
Detection Limit	Antibody detection limit dilution 1:32000.
Western Blot	Approx 60kDa band observed in Human Placenta lysates (predicted MW of 57kDa according to NP_003321). Recommended for use at 0.1-1µg/ml.
Application Type	Pep-ELISA, WB, IHC

DOCUMENTS

- [Data Sheet](#)

GALLERY IMAGES

