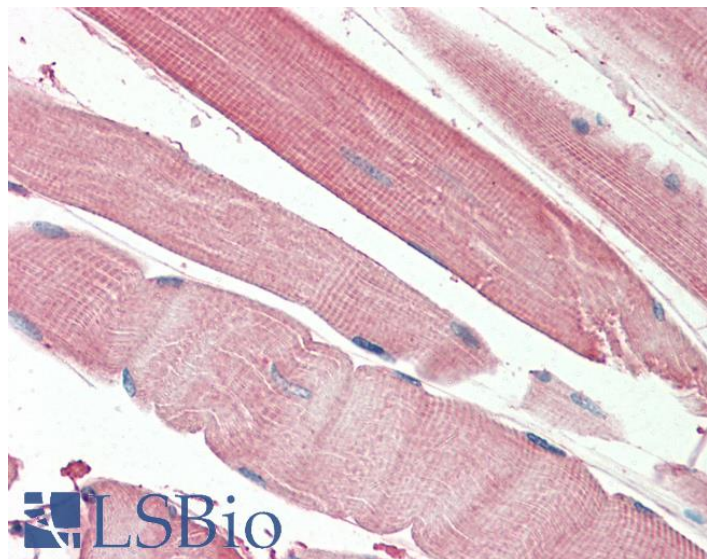


# GOAT ANTI-THNSL2 (AA192-204) ANTIBODY

**SKU:** EB11889



## SPECIFICATIONS

**Formulation** Supplied at 0.5 mg/ml in Tris saline, 0.02% sodium azide, pH7.3 with 0.5% bovine serum albumin.

**Unit Size** 100 µg

**Storage Instructions** Aliquot and store at -20°C. Minimize freezing and thawing.

**Accession ID** NP\_060741.3; NP\_001231605.1; NP\_001231607.1

**Blocking Peptide** EBP11889

**Immunogen** Peptide with sequence C-EGNSDELDEPIKT, from the internal region of the protein sequence according to NP\_060741.3; NP\_001231605.1; NP\_001231607.1.

**Product Comments** This antibody is expected to recognize all reported isoforms (NP\_060741.3; NP\_001231605.1; NP\_001231607.1).

**Peptide Sequence** C-EGNSDELDEPIKT

**Purification Method** Purified from goat serum by ammonium sulphate precipitation followed by antigen affinity chromatography using the immunizing peptide.

**Shipping Instructions** Refrigerated

<b>Predicted Species</b>	Human, Cow
<b>Reactive Species</b>	Human
<b>Human Gene ID</b>	55258
<b>Product Grade</b>	<a href="https://prod-vector-labs-pimcore-assets.s3.us-east-1.amazonaws.com/assets/products/image/elite_medium.png">https://prod-vector-labs-pimcore-assets.s3.us-east-1.amazonaws.com/assets/products/image/elite_medium.png</a>
<b>IHC Results</b>	Paraffin embedded Human Skeletal Muscle. Recommended concentration: 5µg/ml.
<b>ELISA</b>	
<b>Detection Limit</b>	Antibody detection limit dilution 1:128000.
<b>Western Blot</b>	Approx 40kDa band observed in Human Colorectal cancer lysates (calculated MW of 45.0kDa according to NP_001231605.1). Recommended concentration: 1-3µg/ml. Primary incubation was 1 hour.
<b>Application Type</b>	Pep-ELISA, WB, IHC

## DOCUMENTS

- [Data Sheet](#)

## GALLERY IMAGES

