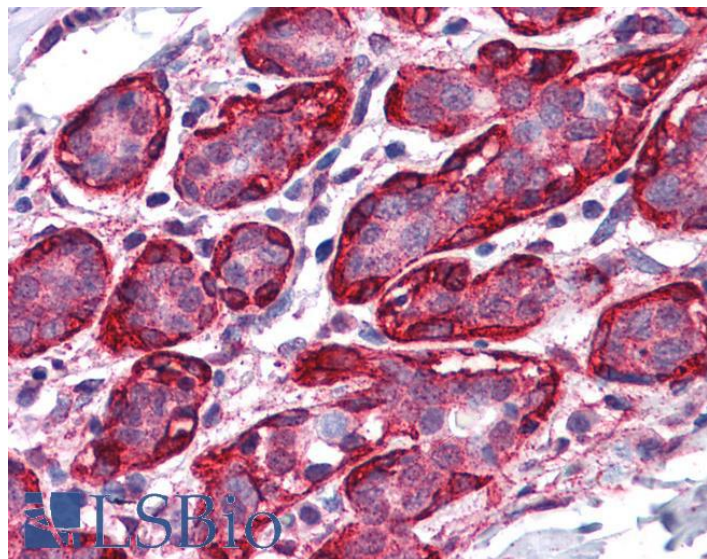


# GOAT ANTI-THRA ANTIBODY

**SKU:** EB07965



## SPECIFICATIONS

<b>Formulation</b>	Supplied at 0.5 mg/ml in Tris saline, 0.02% sodium azide, pH7.3 with 0.5% bovine serum albumin.
<b>Unit Size</b>	100 µg
<b>Storage Instructions</b>	Aliquot and store at -20°C. Minimize freezing and thawing.
<b>Synonym / Alias Names</b>	triiodothyronine receptor thyroid hormone receptor, alpha avian erythroblastic leukemia viral (v-erb-a) oncogene homolog ERBA-related 7 c-ERBA-1 THRA2 THRA1 NR1A1 MGC43240 MGC000261 ERBA1 ERBA ERB-T-1 EAR7 AR7 thyroid hormone receptor, alpha (erythroblastic leukemia viral (v-erb-a) oncogene homolog, avian) THRA
<b>Accession ID</b>	NP_955366.1; NP_003241.2
<b>Blocking Peptide</b>	EBP07965
<b>Immunogen</b>	Peptide with sequence C-KEEMIRSLQQR, from the internal region of the protein sequence according to NP_955366.1; NP_003241.2.
<b>Product Comments</b>	This antibody is expected to recognize both reported isoforms (NP_955366.1; NP_003241.2). This antibody is not expected to cross-react to THRB.
<b>Peptide Sequence</b>	C-KEEMIRSLQQR

<b>Purification Method</b>	Purified from goat serum by ammonium sulphate precipitation followed by antigen affinity chromatography using the immunizing peptide.
<b>Shipping Instructions</b>	Refrigerated
<b>Predicted Species</b>	Human, Mouse, Rat, Dog, Pig, Cow
<b>Reactive Species</b>	Human
<b>Human Gene ID</b>	7067
<b>Mouse Gene ID</b>	21833
<b>Rat Gene ID</b>	81812
<b>Product Grade</b>	<a href="https://prod-vector-labs-pimcore-assets.s3.us-east-1.amazonaws.com/assets/products/image/elite_medium.png">https://prod-vector-labs-pimcore-assets.s3.us-east-1.amazonaws.com/assets/products/image/elite_medium.png</a>
<b>IHC Results</b>	Paraffin embedded Human Tonsil and Breast. Recommended concentration: 3.75µg/ml.
<b>ELISA</b>	
<b>Detection Limit</b>	Antibody detection limit dilution 1:32000.
<b>Western Blot</b>	Approx 60+50kDa bands observed in Human Bone Marrow lysates (calculated MW of 54.8kDa according to NP_003241.2 and of 46.8kDa according to NP_955366.1). Recommended concentration: 0.5-1ug/ml. Primary incubation was 1 hour.
<b>Application Type</b>	Pep-ELISA, WB, IHC

## DOCUMENTS

- [Data Sheet](#)

## GALLERY IMAGES

