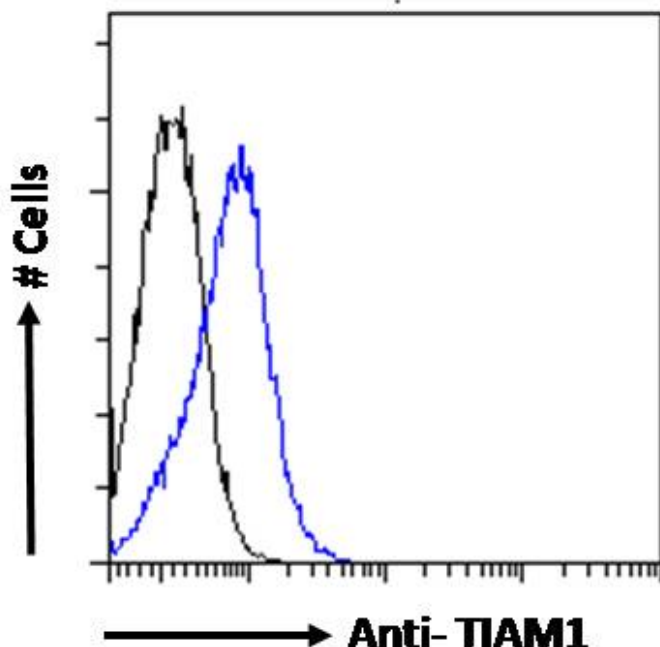


# GOAT ANTI-TIAM1 ANTIBODY

SKU: EB06182



## SPECIFICATIONS

<b>Formulation</b>	Supplied at 0.5 mg/ml in Tris saline, 0.02% sodium azide, pH7.3 with 0.5% bovine serum albumin.
<b>Unit Size</b>	100 µg
<b>Storage Instructions</b>	Aliquot and store at -20°C. Minimize freezing and thawing.
<b>Synonym / Alias Names</b>	human T-lymphoma invasion and metastasis inducing TIAM1 protein T-cell lymphoma invasion and metastasis 1 TIAM1
<b>Usage Summary</b>	<strong>Immunofluorescence:</strong> Strong expression of the protein seen in the cytoplasm and nuclei of U2OS cells. Recommended concentration: 10µg/ml. <strong>Flow Cytometry:</strong> Flow cytometric analysis of Jurkat cells. Recommended concentration: 10ug/ml.
<b>Accession ID</b>	NP_003244; NP_001340613.1; NP_001340614.1; NP_001340615.1; NP_001340616.1
<b>Blocking Peptide</b>	EBP06182

<b>Immunogen</b>	Peptide with sequence C-EDFAPSRKLNTEI, from the C Terminus of the protein sequence according to NP_003244; NP_001340613.1; NP_001340614.1; NP_001340615.1; NP_001340616.1.
<b>Peptide Sequence</b>	C-EDFAPSRKLNTEI
<b>Purification Method</b>	Purified from goat serum by ammonium sulphate precipitation followed by antigen affinity chromatography using the immunizing peptide.
<b>Shipping Instructions</b>	Refrigerated
<b>Predicted Species</b>	Human
<b>Reactive Species</b>	Human
<b>Human Gene ID</b>	7074
<b>Mouse Gene ID</b>	21844
<b>Product Grade</b>	<a href="https://prod-vector-labs-pimcore-assets.s3.us-east-1.amazonaws.com/assets/products/image/elite_medium.png">https://prod-vector-labs-pimcore-assets.s3.us-east-1.amazonaws.com/assets/products/image/elite_medium.png</a>
<b>ELISA Detection Limit</b>	Antibody detection limit dilution 1:128000.
<b>Application Type</b>	Pep-ELISA, IF, FC

## DOCUMENTS

- [Data Sheet](#)

## GALLERY IMAGES

