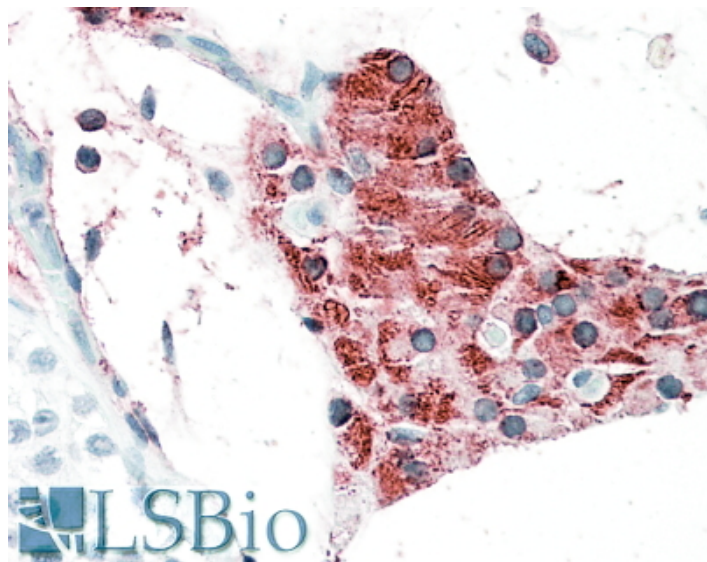


GOAT ANTI-TIAM2 ANTIBODY

SKU: EB10560



SPECIFICATIONS

Formulation Supplied at 0.5 mg/ml in Tris saline, 0.02% sodium azide, pH7.3 with 0.5% bovine serum albumin.

Unit Size 100 µg

Storage Instructions Aliquot and store at -20°C. Minimize freezing and thawing.

Synonym / Alias Names T-lymphoma invasion and metastasis-inducing protein 2| SIF and TIAM1-like exchange factor| OTTHUMP00000017472| TIAM-2| STEF| FLJ41865| T-cell lymphoma invasion and metastasis 2|TIAM2

Accession ID NP_036586.2

Blocking Peptide EBP10560

Immunogen Peptide with sequence TLQGSKNHSNT-C, from the N Terminus of the protein sequence according to NP_036586.2.

Product Comments This antibody is expected to recognize isoform a (NP_036586.2) only.

Peptide Sequence TLQGSKNHSNT-C

Purification Method Purified from goat serum by ammonium sulphate precipitation followed by antigen affinity chromatography using the immunizing peptide.

Shipping Instructions	Refrigerated
Predicted Species	Human, Mouse, Dog
Reactive Species	Human
Human Gene ID	26230
Mouse Gene ID	24001
Product Grade	https://prod-vector-labs-pimcore-assets.s3.us-east-1.amazonaws.com/assets/products/image/elite_medium.png
IHC Results	In paraffin embedded Human Testis shows cytoskeletal staining in interstitial (Leydig) cells. Recommended concentration: 5-10µg/ml.
ELISA	
Detection Limit	Antibody detection limit dilution 1:64000.
Application Type	Pep-ELISA, IHC

DOCUMENTS

- [Data Sheet](#)

GALLERY IMAGES

